

TOWN CASA FLOOR PLANS

Jade Fields

STEI8HT

New Cairo

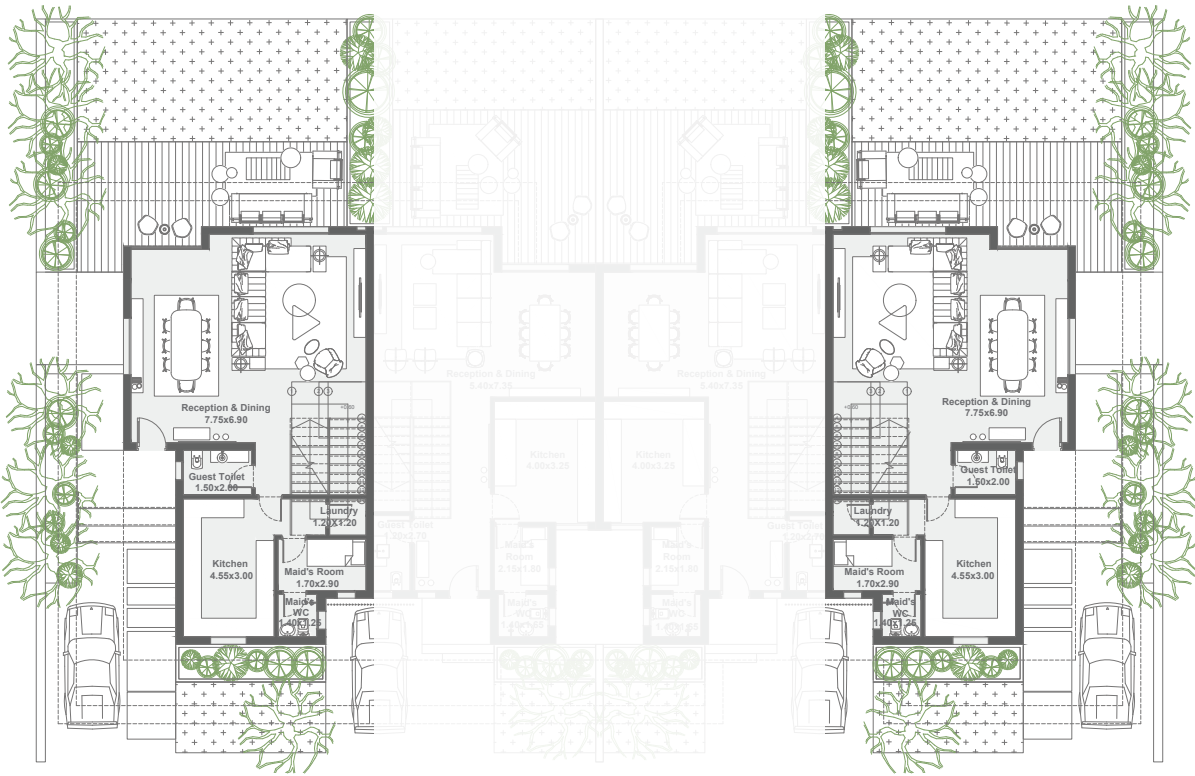


Disclaimer
Diagrams are not to scale and are for illustrative purposes only. All rendering & landscaping visuals, materials, facades are for indicative purposes only, and subject to change. LMD reserves the right to make non-fundamental changes to the design provided herein.

CORNER TOWN CASA

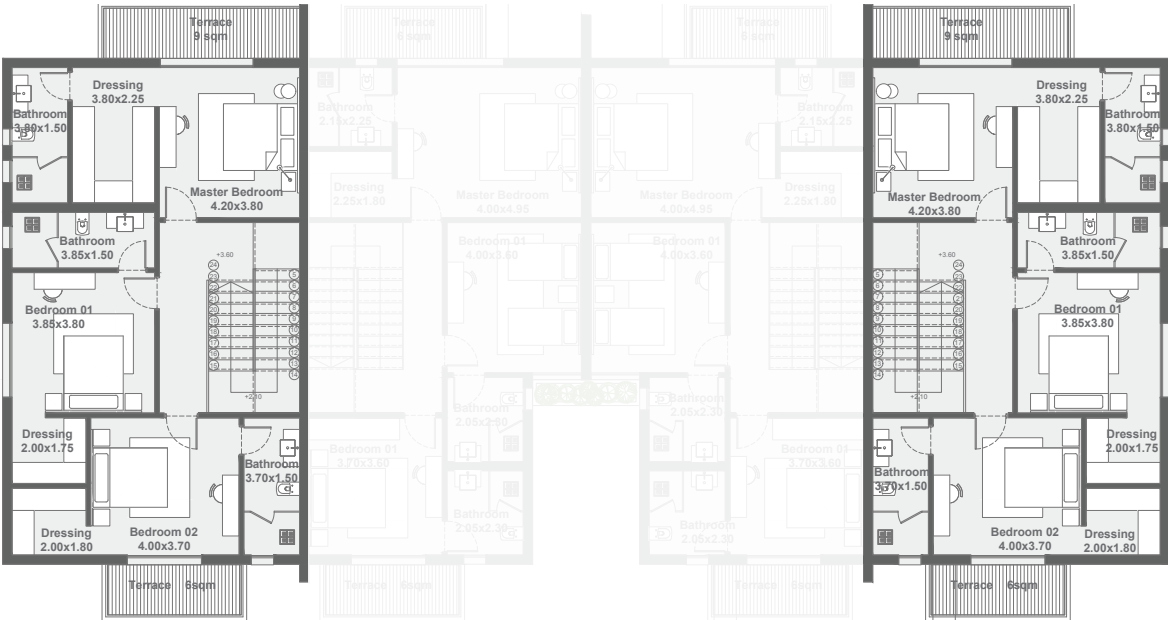
TOTAL AREA: 315 m²

BEDROOM: 3
DRIVER ROOM: N/A
NANNY'S ROOM: ✓
OFFICE: N/A



GROUND FLOOR

DISCLAIMER
Any Concept Renderings as shown for the residences are representative only, and the Developer reserves the right to make alterations. Renders and accompanying visual materials are intended for illustrative purposes As well as All Landscaping and lagoons. Windows, decks, porches, colors, cladding, terraces, and the exterior elements may vary upon elevation.



FIRST FLOOR



ROOFTOP FLOOR

MIDDLE TOWN CASA

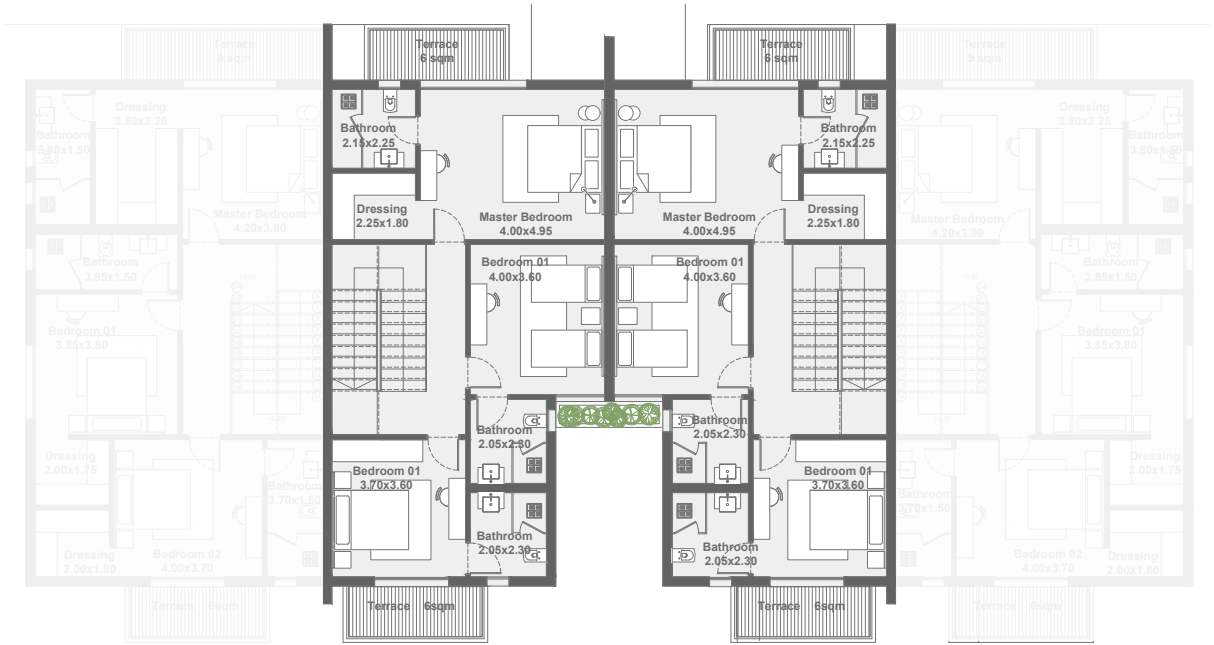
TOTAL AREA: 275 m²

BEDROOM: 3
DRIVER ROOM: N/A
NANNY'S ROOM: ✓
OFFICE: N/A

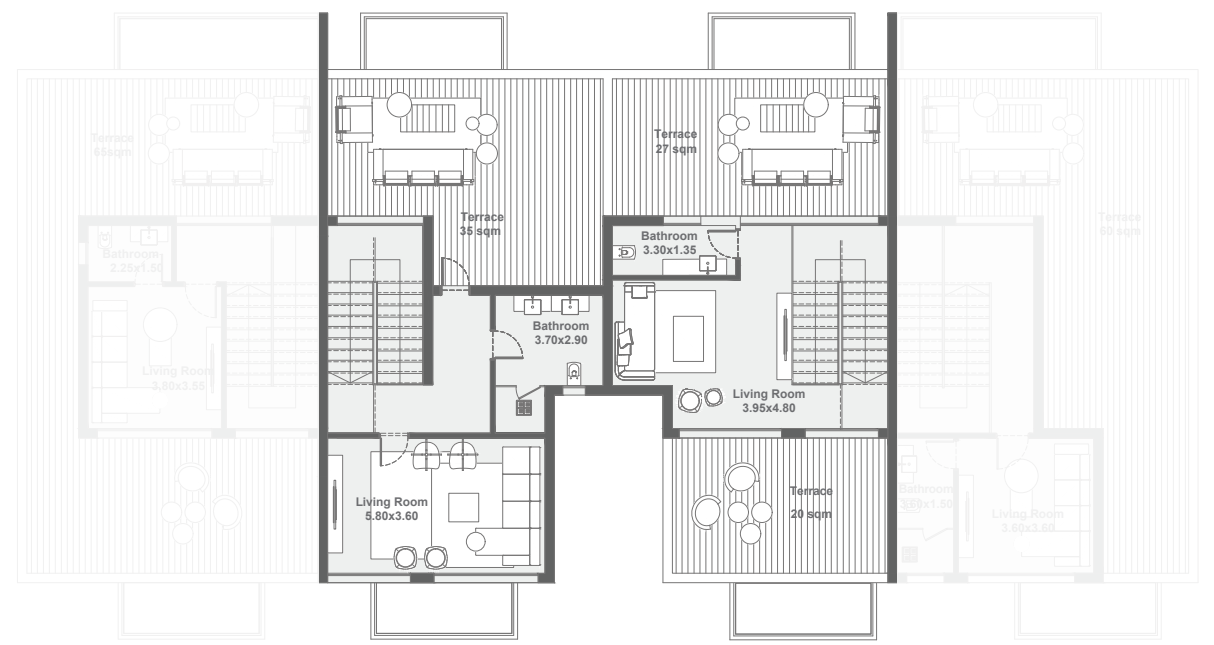


GROUND FLOOR

DISCLAIMER
Any Concept Renderings as shown for the residences are representative only, and the Developer reserves the right to make alterations. Renders and accompanying visual materials are intended for illustrative purposes As well as All Landscaping and lagoons. Windows, decks, porches, colors, cladding, terraces, and the exterior elements may vary upon elevation.



FIRST FLOOR



ROOFTOP FLOOR

LMD° | **lmd.com.eg**
16295

:Headquarters & Showroom
90th Street South, New Cairo, Cairo, Egypt - One Ninety