

VILLAS FLOOR PLANS

Jade Fields

STEI8HT

New Cairo

LAVISH VILLAS



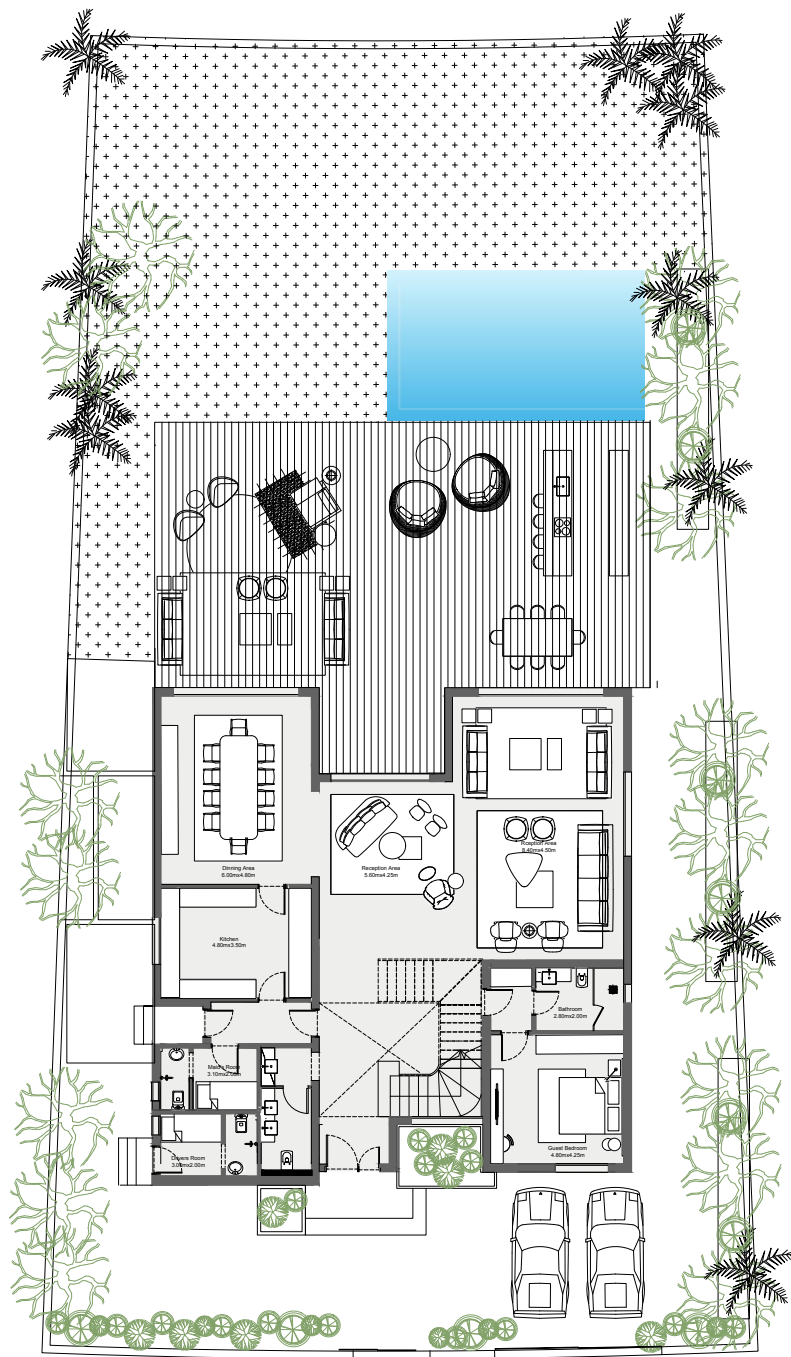
Disclaimer

Diagrams are not to scale and are for illustrative purposes only. All rendering & landscaping visuals, materials, facades are for indicative purposes only, and subject to change. LMD reserves the right to make non-fundamental changes to the design provided herein.

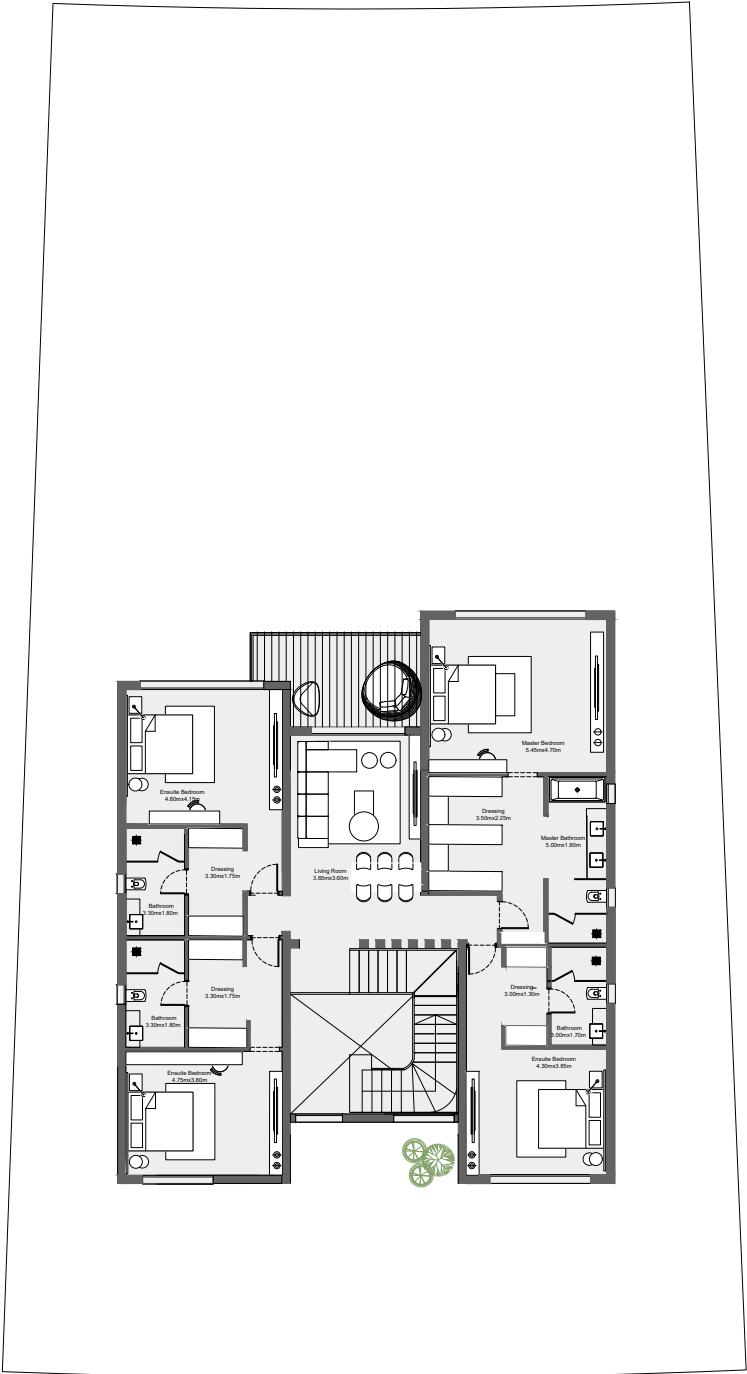
LAVISH VILLAS

TOTAL AREA: 615 m²

BEDROOM: 4
DRIVER ROOM: ✓
NANNY'S ROOM: ✓
OFFICE: ✓



GROUND FLOOR



FIRST FLOOR

DISCLAIMER
Any Concept Renderings as shown for the residences are representative only, and the Developer reserves the right to make alterations.
Renders and accompanying visual materials are intended for illustrative purposes As well as All Landscaping and lagoons.
Windows, decks, porches, colors, cladding, terraces, and the exterior elements may vary upon elevation.

GRANDE VILLAS



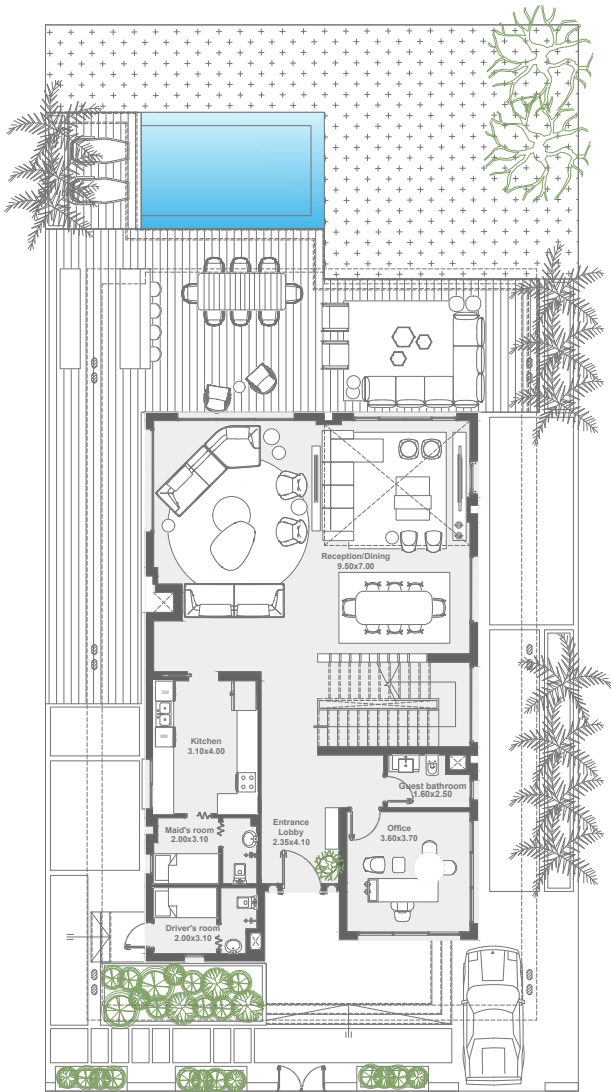
Disclaimer

Diagrams are not to scale and are for illustrative purposes only. All rendering & landscaping visuals, materials, facades are for indicative purposes only, and subject to change. LMD reserves the right to make non-fundamental changes to the design provided herein.

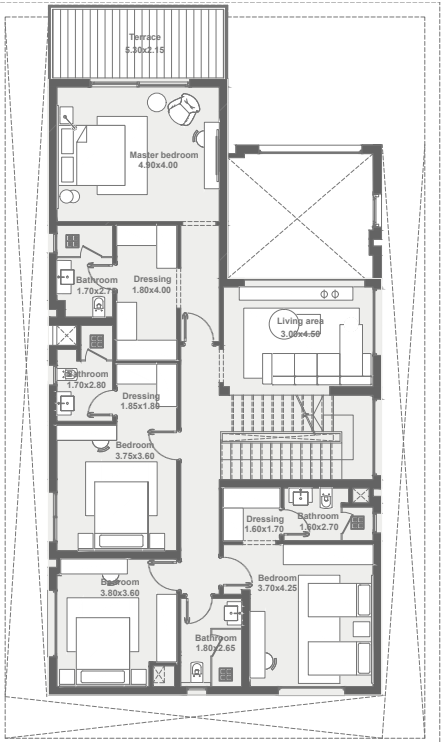
GRANDE VILLAS

TOTAL AREA: 484 m²

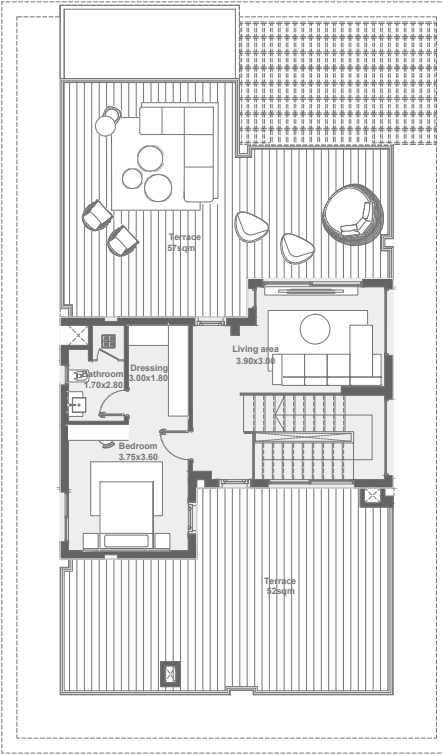
BEDROOM: 4
DRIVER ROOM: ✓
NANNY'S ROOM: ✓
OFFICE: ✓



GROUND FLOOR



FIRST FLOOR



PENTHOUSE FLOOR

DISCLAIMER
Any Concept Renderings as shown for the residences are representative only, and the Developer reserves the right to make alterations.
Renders and accompanying visual materials are intended for illustrative purposes As well as All Landscaping and lagoons.
Windows, decks, porches, colors, cladding, terraces, and the exterior elements may vary upon elevation.

SIGNATURE VILLAS



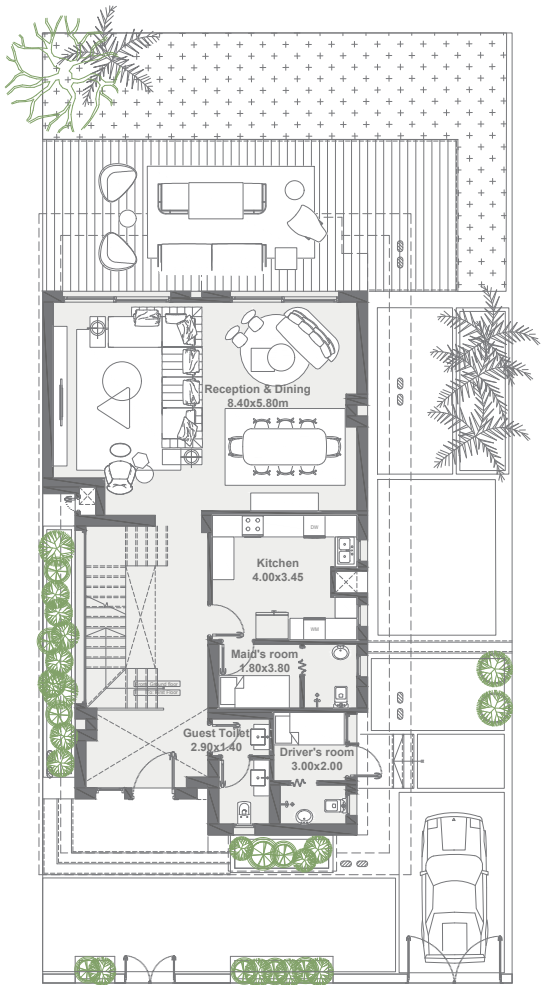
Disclaimer

Diagrams are not to scale and are for illustrative purposes only. All rendering & landscaping visuals, materials, facades are for indicative purposes only, and subject to change. LMD reserves the right to make non-fundamental changes to the design provided herein.

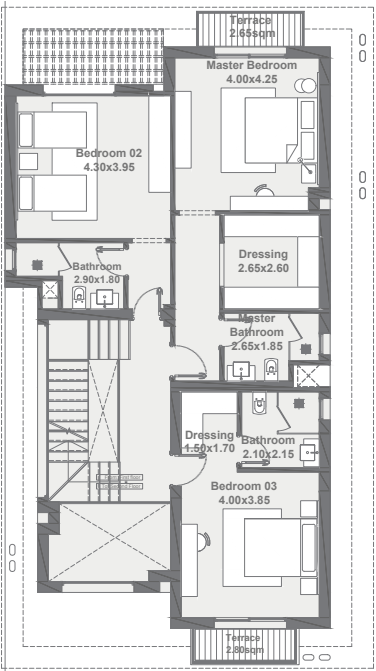
SIGNATURE VILLAS

TOTAL AREA: 390 m²

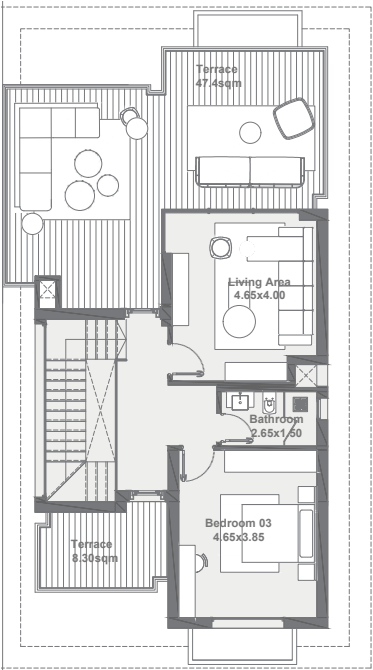
BEDROOM: 4
DRIVER ROOM: ✓
NANNY'S ROOM: ✓
OFFICE: N/A



GROUND FLOOR



FIRST FLOOR



PENTHOUSE FLOOR

DISCLAIMER

Any Concept Renderings as shown for the residences are representative only, and the Developer reserves the right to make alterations. Renders and accompanying visual materials are intended for illustrative purposes As well as All Landscaping and lagoons. Windows, decks, porches, colors, cladding, terraces, and the exterior elements may vary upon elevation.



Disclaimer

Diagrams are not to scale and are for illustrative purposes only. All rendering & landscaping visuals, materials, facades are for indicative purposes only, and subject to change. LMD reserves the right to make non-fundamental changes to the design provided herein.

LMD° | **lmd.com.eg**
16295

:Headquarters & Showroom
90th Street South, New Cairo, Cairo, Egypt - One Ninety