

20
23

//

LMD°

Portfolio

lmd.com.eg

20
23

//

LMD°

Portfolio

lmd.com.eg

The logo for LMD, consisting of the letters 'LMD' in a bold, white, sans-serif font, followed by a small degree symbol (°).

LMD°

The title 'Intro-duction' is written in a large, white, sans-serif font, split across two lines. The background is a dark, solid color.

Intro-
duction

“Change can be hard. It requires no extra effort to settle for the same old thing. Auto-pilot keeps us locked into past patterns. But transforming your life? That requires courage, commitment, and effort. It’s tempting to stay camped in the zone of That’s-Just-How-It-Is. But to get to the really good stuff in life, you have to be willing to become an explorer and adventurer.”

- John Mark Green

LMD°

Brand Purpose

With a vision extending beyond transforming physical spaces into pacesetting symbols of attraction, LMD strategically identifies gaps and follows it through with craft and commitment, to create meaningful transformations to human lives, by refining living and entertainment standards of sophisticated communities, who believe that aiming for more is a fundamental necessity.





About LMD

True to You

The Transformer

“Our communities are expertly designed with people and the future in mind, somewhere not just to live but to thrive”

Crafting transformative residential and commercial experiences has been LMD’s dedicated pursuit since 2007. An ever-evolving journey of exceptional innovation with the future in mind.

Our signature is larger-than-life destinations that set the benchmark in quality integration & progressive design. We inspire limitless possibilities that empower communities to live, connect and thrive — **a combination that truly sets us apart.**

Our journey resulted in a significant portfolio of iconic mixed-use developments. Spanning the best locations in Egypt, Dubai, Spain, and Greece. We offer community-centric experiences powered by a holistic vision of seamless living — **forever transforming the conventional norms of real estate.**

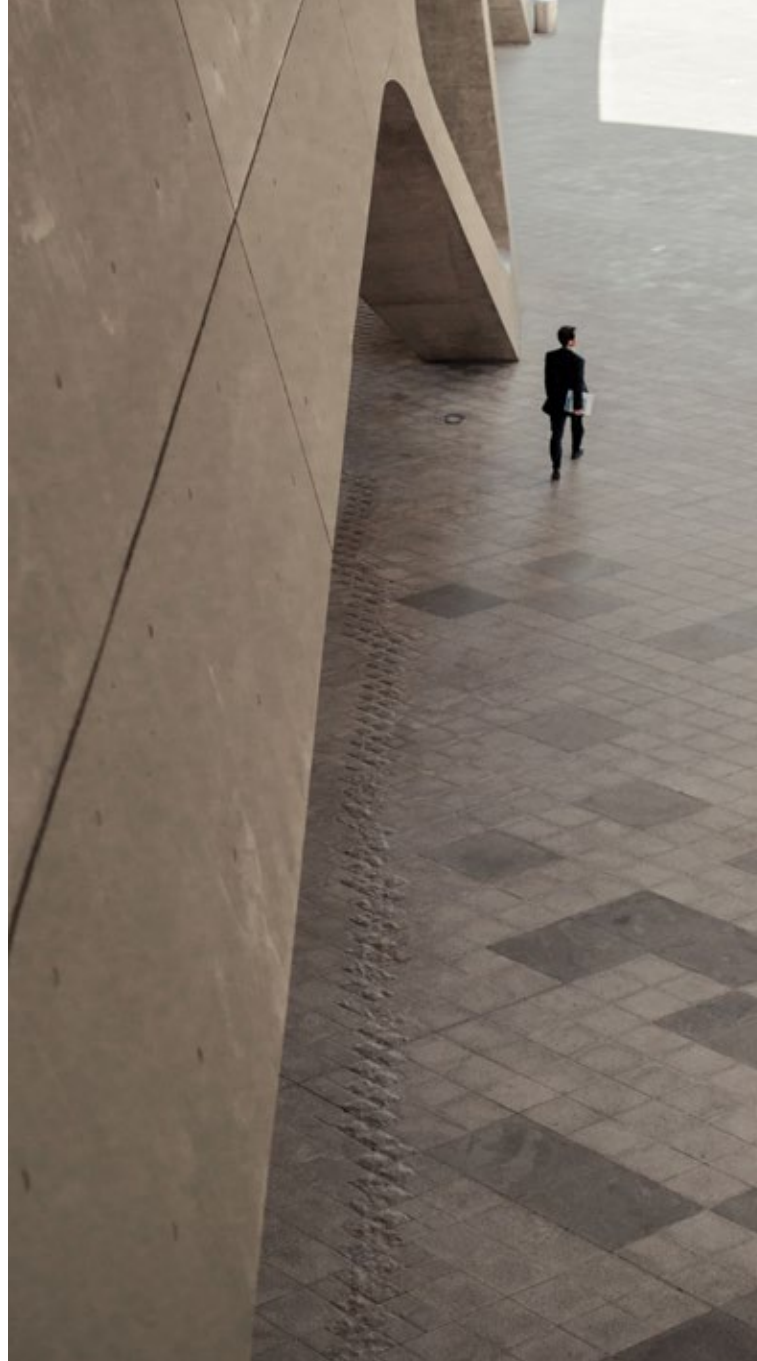
LMD°

LMD Journey

Taking the World by Storm

Global Expansion

“Our knowledge and expertise confidently transcend local boundaries to meet the rising demand on integrated quality with a strong amenity offering. We create a deep sense of belonging within our developments and a wider local area in which we operate”



LMD is committed to geographic expansion that reflects its distinctive vision of a world in search of premium developments that transcend the ordinary in every aspect.

In 2011, the company embarked on a growth journey by founding Continental Investment Company, conceiving its first hallmark project in Dubai Marina; The Continental Tower. In pursuit of continued success was the launch of Rukan’s residential community in Dubai Land to transform integrated living in the region’s beating heart.

In no time, setting a foothold in Europe was an inevitable and strategic move to land LMD in Barcelona, Spain with a world-class address 91 Muntaner, and Greece by the Mediterranean Sea with Athines By the Sea.

LMD Projects

An Unrivaled Footprint of Transformation

Egypt

STE18HT - Mixed-use development & Residential - New Cairo

Eastside - Commercial Destination - New Cairo

One Ninety - Mixed-use development - (Commercial, Retail & Offices) - New Cairo

W Residences Cairo - Branded Residences - New Cairo

Cairo Design District - Commercial & Hospitality - New Cairo

3'Sixty - Commercial (Retail, Offices, Clinics) - Golden Square, New Cairo

Zoya - Second home - Coastal Living - Ghazala Bay, North Coast

Layan Residence - Residential - Golden Square, New Cairo

Aria - Residential - Mostakbal City, New Cairo

Dubai, UAE

Continental Tower - Residential - Marina - Dubai - United Arab Emirates

Rukan - Residential - Dubai Land - Dubai - United Arab Emirates

Marina Living - Residential - AlJaddaf - Dubai - United Arab Emirates

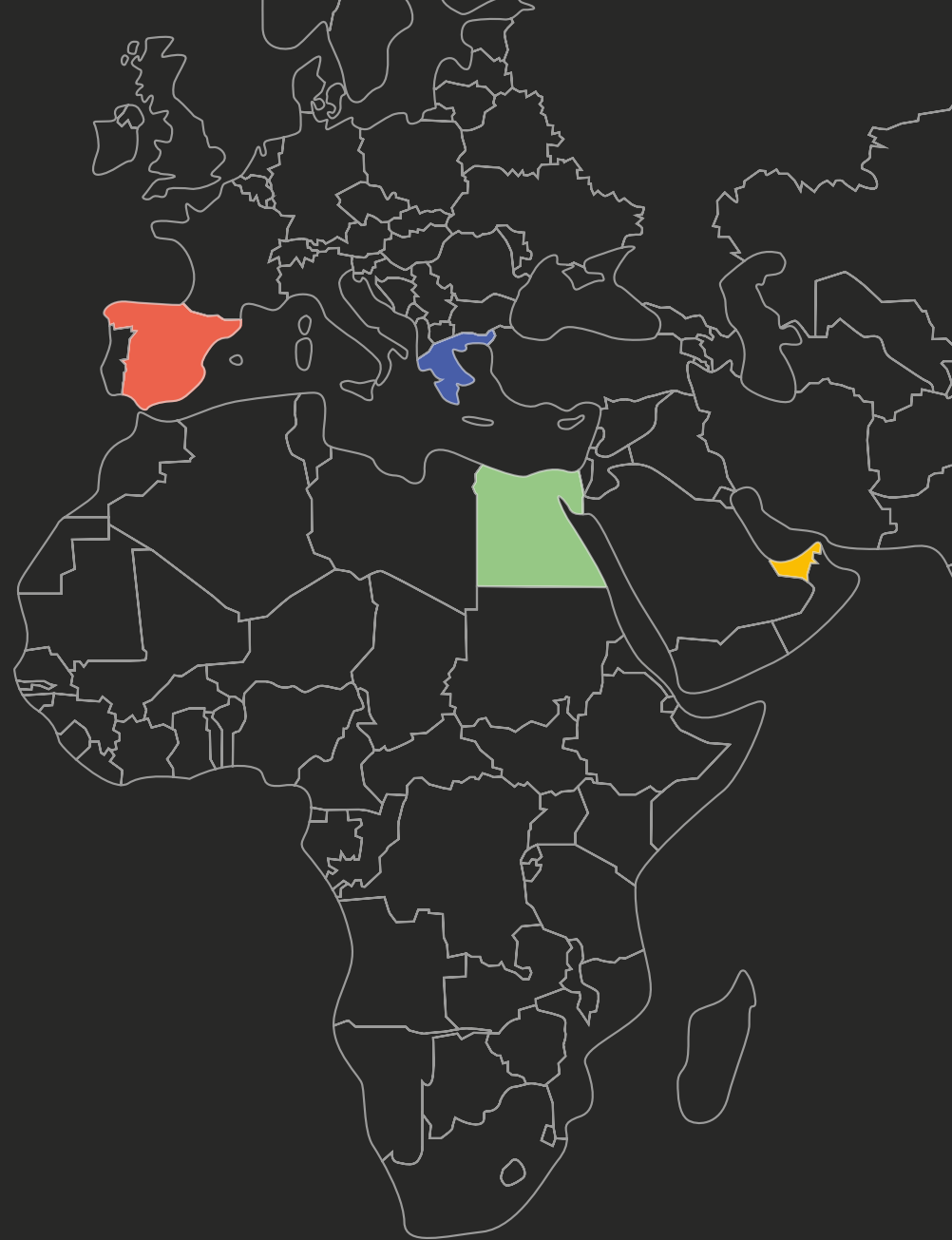
Barcelona, Spain

Muntaner 91 - Residential - Barcelona - Spain

Greece

Athines By The Sea - Hospitality - Athens - Greece

Greece Residential Projects - Greece



LMD Strategic Partners



BOWLER
JAMES
BRINDLEY

LMLT

SOM



Gensler



Marriott
INTERNATIONAL



SHAKER
CONSULTANCY GROUP



EL GHONEIMI

PMJM



PORTLAND.



Alchemy

P R A G M A

ESE

I.El-Habrouk
A.R.C.H.I.T.E.C.T.S

LMD Strategic Partners





Chairman
Eng. Ahmed Sabbour

LMD Visionaries

Transformative Minds Inspiring Leadership

Engineer Sabbour is the visionary name behind LMD. The driving catalyst behind Sabbour companies' growth. Executive Director, partner, and founder of renowned Al-Ahly for Real Estate Development with an authorized capital of EGP 500 million.

Engineer Sabbour's track record of remarkable successes enabled him to bring to the table a world of knowledge to numerous international associations such as The American Society of Civil Engineers, The Egyptian-British Chamber of Commerce in London, Harvard University's ISEP Institution in the Middle East and The National Civil Engineering Honor Society in the United States "Chi Epsilon."

His visionary approach to transformative development left its mark on a multitude of prominent local associations like The World Economic Forum, The Egyptian Scandinavian Business Association, The Young Arab Leaders Institution, and Ein EL Sokhna Investors Association.



Founder & CEO
Eng. Amr Sultan

LMD Visionaries

Transformative Minds Inspiring Leadership

Engineer Amr Sultan is the founder, partner, and Chief Executive Officer of LMD. With over 27 years of unprecedented management expertise in the real estate field.

His track record of success includes managing the leading company Al Ahly for Real Estate Development while acting as deputy CEO of Al Ahly Sabbour Group. With over 57 iconic projects to life in different fields across 12 million m2 in Egypt. Sultan enabled LMD to evolve across diverse ventures in 4 countries and five sectors; construction, real estate development, tourism, retail, and entertainment.

He is among the first developers to penetrate international markets, founding the Continental Investment Company in Dubai and Rukan Compound in Dubai Land. Moreover, he ventured into Europe with Muntaner 91 in the heart of Barcelona and Athines in Greece.

STEI8HT

New Cairo



[For more information
about the project
progress click here](#)

Eight States on the Path of Wholeness

Refined Home Coming - Villas Only Home Living

New Cairo strategic location directly on Yousef Abbas

LMD takes pride in the distinction of STEI8HT's inspiration. Its eight states to reach wholeness. The aesthetic brainchild of leading Alchemy, proudly standing as an exemplary reflection of architectural prestige.

Achieve a state of scenic views & well-being with villa entrances that lay the growth foundation of your emerald trees to give your family moments absolute privacy. Satisfy your state of sustainability, art & culture with sleek contemporary lines perfected by a grand facade and sweeping glass windows that welcome daylight and breathe nature into your living space.

Quench your state of vibrant activity & playfulness through an array of seamless integration between indoor/outdoor experiences. Fulfill your state of glamour & executive focus with volumes of solid & void managed to dazzle you with spatial experiences.

STEI8HT

Intriguing Location

Inspired by life in every direction, Stei8ht is a true definition of utmost exclusivity made accessible.

Thanks to its prime location with easy access to the East of Cairo and immediate access from Mohamed Naguib Road and Youssef Al Sebai Axis for your ultimate peace of mind.



COMPANY PROFILE

STEI8HT

Master planned for a state of wholeness

Around 550 acres of lush foliage with 85% open space and two entrances.

A whole world designed for your most elevated state of wholeness.



STEI8HT

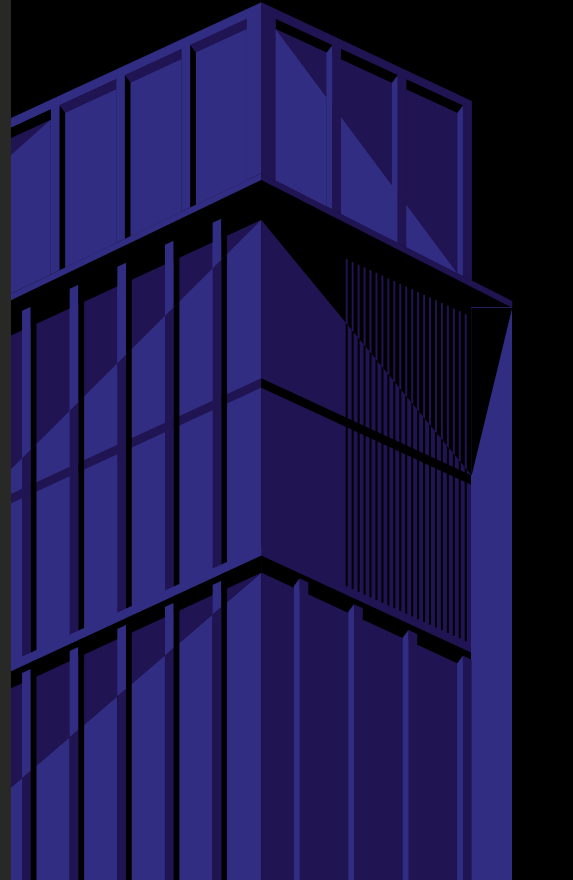
New Cairo



Diagrams are not to scale and are for illustrative purposes only. All rendering & landscaping visuals, materials, facades are for indicative purposes only, and subject to change. LMD reserves the right to make non-fundamental changes to the design provided herein.

eastside®

NEW CAIRO



The Unstoppable Destination

A Commercial Project With a Different kind of Energy

On a dynamic intersection between Mohamed Naguib Axis & Youssef Al Sebai

For those fueled by an unmatched desire to take action, their energy knows no bounds - it becomes an unstoppable force. LMD's Eastside is the catalyst that ignites this energy and maintains its flow through 170 acres of interconnected structures designed to promote infinite dynamic growth. As this cycle continues to evolve, it forms a glowing sphere that absorbs the power of its surroundings and propels it toward its people's ultimate goals.

Eastside is a masterpiece of energy, where its four components work in perfect harmony, creating a seamless flow that powers every single building. The Business Court feeds into Health and Wellness, which in turn fuels Sports and Lifestyle. Finally, the energy flows back into the Shopping and Dining to complete a circuit of vitality that keeps the energy alive and thriving.

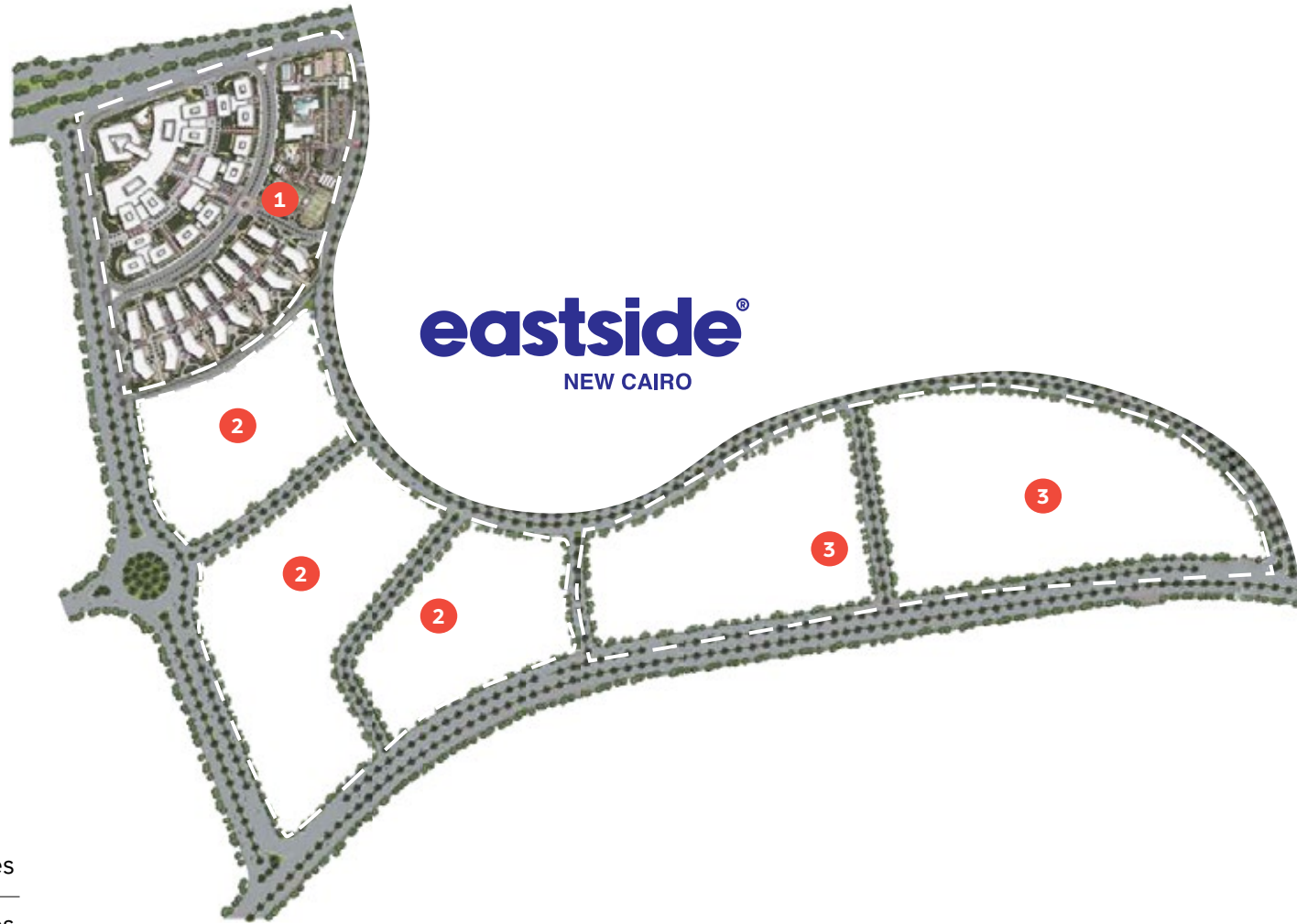
EASTSIDE

Intriguing Location

The dynamic intersection between Mohamed Naguib Axis and Youssef Al Sebai boosts Eastside's energy from every direction. Thanks to its one-of-a-kind prime location, at the core of New Cairo, with easy access to the East of Cairo, it stands as the true definition of ultimate accessibility. From afar, the green power radiates a special charm, privately enjoying direct access from Suez Road and proximity to the AUC and the airport.



EASTSIDE



- 1 Phase 1
- 2 Phase 2
- 3 Phase 3

Eastside 170 acres

STEI8HT 380 acres



eastside[®]

NEW CAIRO

Diagrams are not to scale and are for illustrative purposes only. All rendering & landscaping visuals, materials, facades are for indicative purposes only, and subject to change. LMD reserves the right to make non-fundamental changes to the design provided herein.

ONE·NINETY



[For more information
about the project
progress click here](#)

The Well-Connected Address

A Comprehensive Mixed-used Vision

Located directly on 90 street in New Cairo

Expertly master-planned by leading SOM, the mixed-use development melds the best in branded residences with a lush Urban Park, a cutting-edge Business Quarter, and a select melange of retail luxuries and world-class dining for non-stop entertainment.

One Ninety fuels accelerated productivity in a cutting-edge Business Quarter, spread out on three interconnected quarters to encompass administrative complexes and top-grade office spaces. The mixed-use development radiates a cosmopolitan flare, inviting all corners of the world into a thriving context with Africa's first W Residences Cairo, W Cairo hotel, and Aloft hotel.

Enchanting experiences await, from shopping sprees to artisanal dining and world-class entertainment at Cairo Design District and The Boulevard.

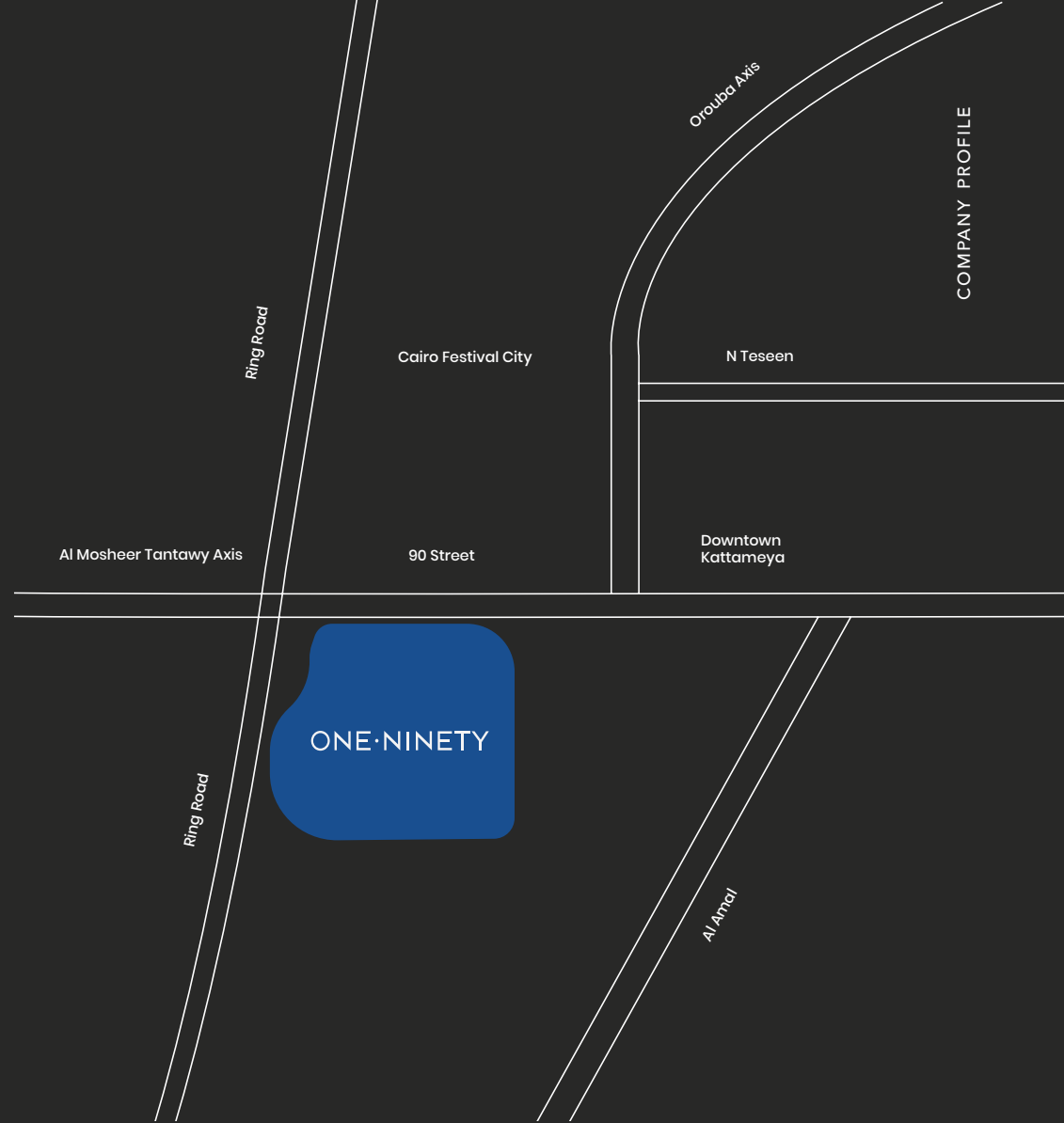
Cairo Design District is a global idea featured for the first time in Cairo by LMD in reference to Dubai, London, and Miami. The latest project proposes an entire precinct dedicated to the passion of design in multiple & diverse sectors. The only place dedicated to design in Cairo.

ONE NINETY

Intriguing Location

One Ninety enjoys an unrivaled location at the intersection of 90 street and Ring Road to introduce an innovative outlook on accessibility.

The mixed-use destination boasts six main entrance to ensure zero congestion - including a private one on the Ring Road - while lying minutes away from the central monorail station with its tunnel for hassle-free access.



ONE NINETY

| | |
|-----------------------|------------------------------|
| Total Land Area | 344,315 m² |
| Total Built Up Area | 460,766 m² |
| Business Quarter | 66,242 m² |
| W Residences Cairo | 42,545 m² |
| W Cairo | 15,616 m² |
| Urban Park | 34,553 m² |
| Cairo Design District | 199,000 m² |
| The Boulevard | 598.8 m |
| Aloft Hotel | 22,000 m² |



ONE·NINETY



Diagrams are not to scale and are for illustrative purposes only. All rendering & landscaping visuals, materials, facades are for indicative purposes only, and subject to change. LMD reserves the right to make non-fundamental changes to the design provided herein.

W CAIRO

THE RESIDENCES



LOVE IT? LIVE IT

Semi-furnished International Branded Residences

—

Located in One Ninety project directly on 90 street

Designed by the world mastermind Gensler and design-led interiors by Bowler James Brindley, LMD takes pride in transforming Africa by developing its first W Residences Cairo experience in Egypt powered by Marriott International, marking its 18th destination worldwide.

W Residences Cairo is hotel-inspired living with limitless luxury and unmistakable style. Design-led interior boasting floor-to-ceiling windows, wonderfully vast terraces, and plush amenities that grant residents endless hours of sunshine. With exclusive access to inspirational views and world-class hospitality just a few steps away at W Cairo hotel.

W RESIDENCES CAIRO

W Residences Cairo is where legendary hotel services are just a touch of a button away on your phone. A 24/7 WHATEVER/WHENEVER® service; personal concierge, full housekeeping, in-residence dining, and effortless access, finished with a personal touch – plus a dedicated residential team at your fingertips. Ownership perks are second to none, unlocking access to the refreshing WET DECK® pool, signature treatments at AWAY SPA®, energizing work-outs at FIT® FITNESS CENTER, and collaborative productivity at WIRED® BUSINESS CENTER.

A sip on a colorful cocktail in atmospheric settings at THE LIVING ROOM® is how a day draws to an end at W Residences Cairo, perfected by memorable tunes or a networking night out at the owners exclusive Club House where limitless opportunities thrive.



Intriguing Location

W Residences Cairo lies at the center stage of New Cairo in an exclusive location, captured by One Ninety's premium spot at the meeting point between 90 street and the Ring Road.

The lifestyle destination is easily accessible from all vital highways in Cairo while offering direct access through the central monorail station and One Ninety's private tunnel.



W RESIDENCES CAIRO

1. W Cairo hotel
2. W Cairo hotel Drop Off
3. W Cairo hotel Events Drop Off
4. W Residences Cairo Gate
5. W Residences Cairo Drop Off
6. Parking Entrances
7. Club House - Roof Top Pavilion
8. Club House
9. W Residences Cairo Pool
10. Play Area
11. Amenity Gardens
12. Running Track
13. Landscape



W Residences Cairo **47,876 m²**

W Cairo hotel **10,699 m²**

W CAIRO

THE RESIDENCES

Diagrams are not to scale and are for illustrative purposes only. All rendering & landscaping visuals, materials, facades are for indicative purposes only, and subject to change. LMD reserves the right to make non-fundamental changes to the design provided herein.



CAIRO
DESIGN
DISTRICT



The Design Highlight of the City

The First Forward-Looking Immersive Cultural

Sketched at the meeting point between Ring Road and 90 Street in One Ninety

Enter the innovative world of Cairo Design District - a global idea brought to life for the first time in Cairo by LMD, inspired by Dubai, London, and Miami. This latest project is a precinct exclusively dedicated to the passion for design in multiple and diverse sectors. It's a district where mavericks in Fashion, Art & Culture, Culinary, Contemporary Offices, Hospitality, and Entertainment can bounce their ideas off each other, fostering a collaborative spirit.

This immersive cultural experience captures a moment in time and redefines what it means to work, play, and shop. The overall design is a transformative visitor experience, with micro-environments that have their own architectural identity. The district is curated with interactive art installations & a lively museum that makes it an episodic destination that must be experienced. CDD is a world-class luxury district that's poised to put Cairo on the map.



Fashion Designers

The district for transformative trendsetters. The clothes whisperers. They know what's hot and what's not. Both international inspirational designers and aspirationally growing and passionate ones will always have a place here to work their magic. For the love of fashion, all designers are welcome to show the colorful fabrics and figments of their imagination.

- Fashion Stores
- Premium Brand Stores
- Luxury Bespoke Retail
- Convenient Retailers
- Luxury Showroom Retail
- Modern Pop-up Pavilions

Art & Culture

Yoga, Fitness, Health & Dance
Cinemas & Theatres
Event Centers & Art Galleries
Interior Furniture & Accessories Outlets
Handmade Designs
Creative Services

Enter a cluster of art & culture via a venue of dynamic arts & interactive galleries that will captivate and stimulate your artistic sensory system. Every piece of work is meticulously hand-selected with nothing less than an enriching experience as the standard.



Culinary Artists

This segment is for a different kind of craft. It's the zone for all artists that have a cultivated gift for finding the perfect mixture of spices and garnishing them with flavors that leaves our taste buds in absolute awe. Raise your expectations as high as your flavorsome fantasy wants with this masterpiece of a culinary experience.

INSIDE CDD



Luxury Fine Dining
High-end Casual Dining
Trending Bars
Bistros
International Cuisine Experiences

Contemporary Offices

You'll feel a breeze of inspiration within the contemporary office zone. The air is full of creative fireflies hovering with ideas from advertising agencies and digital media publishers. Watch the masters of communication in action and discern the originality of telepathic motion caused by TV/radio/broadcasting offices and production houses.

Creative Agencies (Advertising, PR, Marketing, Digital, Events and TV/Radio Production Houses)

Architecture, Designing & Engineering Firms

Consulting Groups (Business Management & Legal Advisers)

Global Corporations (FMCGs, Automotive, Telecom, Banking & Electronics)

Fashion Houses, Designers & Makers

Co-working Spaces for Creative Freelancers and Startups



Entertainment

Here is where the spotlight highlights worldwide events. The stage for international entertainment, on the soil of Cairo. It is intended to be the attraction for entertainers from all around the globe and the spot all creators go to unwind, have fun, and get back to inspiring those around them.

Arena for Mega Musical Concerts
Ticketing and Public Events





Maestros of Hospitality

Ideally situated in the beating heart of One Ninety's Design District are signature hotels that will open your eyes to the beauty of space combined with spirit to surround you with a fresh and vibrant environment, enhancing your stay at every touchpoint.

Ideal for all the professionals in the business world. Compliment your visit with a full range of hand-selected amenities, an ideal location at the entrance of New Cairo, and the next generation of technology. Top-tier comfort for you to disconnect while always staying connected with everything happening in the world.



The Boulevard

You no longer have to travel thousands of miles to wander freely and lose yourself in a car-free street experience where every corner is a lively ticket to endless entertainment and discovery. The Boulevard is One Ninety's version of Oxford Street in London and Champs-Élysées in Paris.

Set to become a lively happening spot and a thriving social nexus for guaranteed fun. The Boulevard passes through CDD carrying with it, aesthetic surroundings, grand encounters, and infinite opportunities for sensory indulgence, everywhere you turn.

CDD

Intriguing Location

Living at One Ninety translates to vitality flaring from every direction, whether within the mixed-use development or outside your intimate world.

Sketched at the meeting point between Ring Road and 90 Street, One Ninety boasts six entrances for an uninterrupted stream of creativity. With its private gate, located directly on the Ring Road, Cairo Design District welcomes all global & local innovators with open arms.

The monorail station on 90 Street, One Ninety, has a tube leading right into the development to grant its community access to all the exclusive “first times” happening in One Ninety.



CDD

| | |
|---------------------|------------------------|
| Total Built Up Area | 199,000 m ² |
| Hotels | 30,000 m ² |
| Retail | 53,000 m ² |
| Offices | 116,000 m ² |
| Buildings Height | G+5 |





CAIRO
DESIGN
DISTRICT



Diagrams are not to scale and are for illustrative purposes only. All rendering & landscaping visuals, materials, facades are for indicative purposes only, and subject to change. LMD reserves the right to make non-fundamental changes to the design provided herein.

3's i x t y



[For more information
about the project
progress click here](#)

The Circle of Life

Commercial & Leisure Mix (Offices, Clinics, Retail)

Reviving New Cairo's Golden Square

Masterplanned by world-leading design firm Gensler in collaboration with global retail consultant JLL, 3'Sixty is a kaleidoscopic world.

Combining the best in retail with top-grade office spaces and clinics elevated on varied site levels. 3'Sixty offers contemporary building complexes comprised of cutting-edge polyclinics, medical centers, and an inspiring office park that captures the best in function and form.

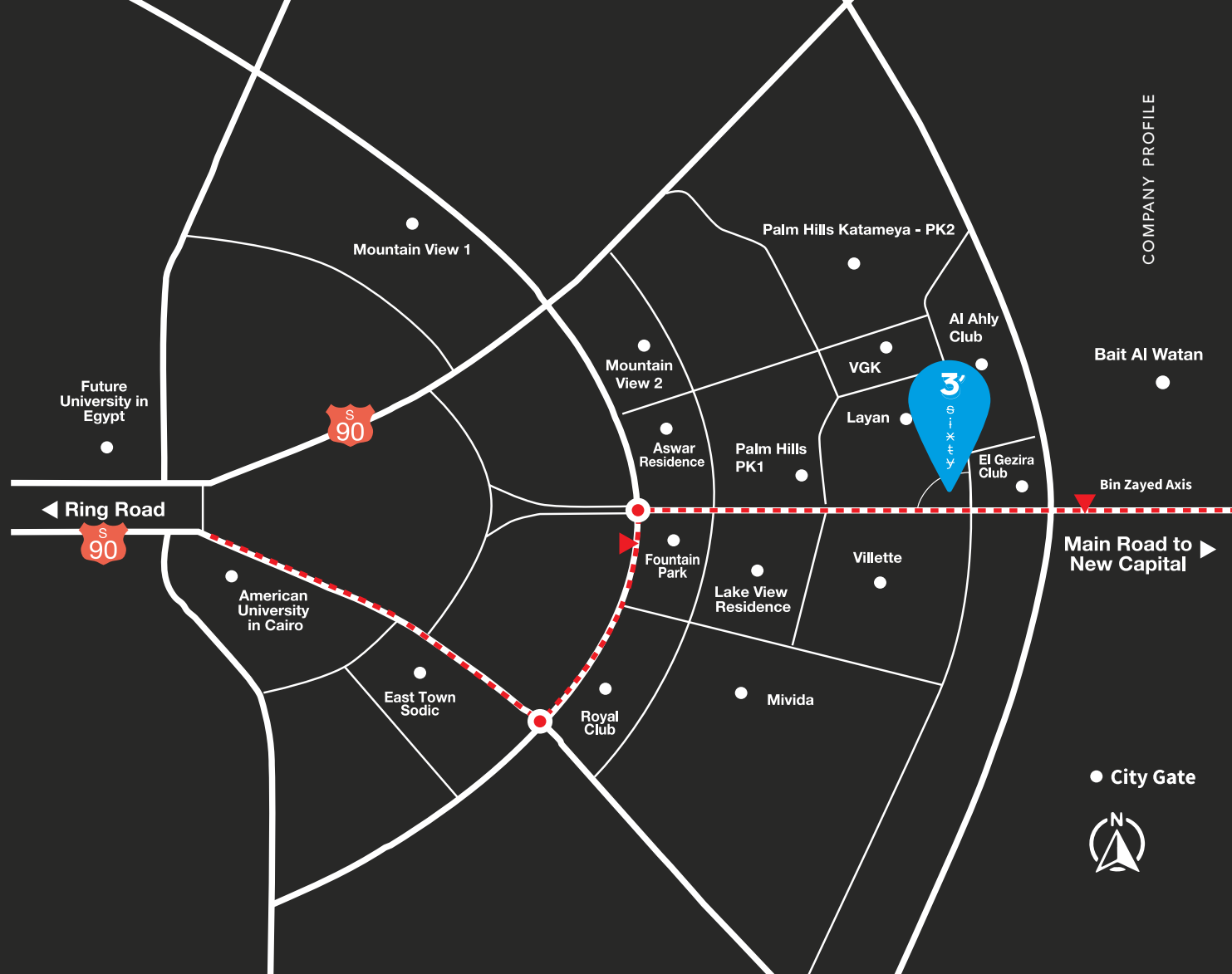
At the heart of the project is a retail zone with a multitude of dining options, exquisite cafés complemented with spacious parking, from art and music galleries, daycare centers, beauty salons, and a cutting-edge gym to an abundant variety of shops, an entertainment center, supermarket, and a cinema complex.

3'SIXTY

Intriguing Location

3'Sixty boasts a strategic location on Bin Zayed's Axis and is ideally situated at the Fifth Settlement's Golden Square to provide direct access to both the New Capital and New Cairo.

The iconic development has three entrances for a hassle-free experience, accessible from vital areas within the city.



COMPANY PROFILE

3'SIXTY



Total Land Area **55,203 m²**

Total Built up Area **153,642 m²**

Outdoor Area **70%**

Footprint **30%**

Parking Slots **1,700 APPROX.**

G+3

36ty



Diagrams are not to scale and are for illustrative purposes only. All rendering & landscaping visuals, materials, facades are for indicative purposes only, and subject to change. LMD reserves the right to make non-fundamental changes to the design provided herein.

Layan



French Elegance Re-imagined

Residential Refinement

Re-imagining individuality in New Cairo's Golden Square

Delivered and fully liveable

LMD transforms the luxurious living into the art of breathing villas with Layan. An interpretation of French sophistication, paying tribute to true art de Vivre.

The development captures the expansive green suburbs of Versailles, the flowing serenity of the Seine River, and the atmospheric vibes of French boulevards. It marks a distinguished character built with ultimate privacy in mind.

A signature collection of; opulent villas, elegantly appointed twin houses and spacious town homes to suit every taste and lifestyle. Layan boasts a cutting-edge gym, a tranquil spa, a swimming pool, tennis courts, inspiring retail facilities, and a business park — all opening onto infinite greenery, evoking expansive feelings of chic French vibes.

Intriguing Location

Quietly nestled in the beating destination of New Cairo, just a few steps away from Platinum Club, Layan is strategically located in New Cairo's Golden Square.

The premium neighborhood in New Cairo is neighbored by top-grade developers & lively institutions in every direction. Layan also lies at the entrance of the New Administrative Capital, accessible from Bin Zayed's Axis.



LAYAN



Total Land Area **942,918 m²**

Number of Units **1200**

REAL SHOT

Layan



ARIA



The Smart Life

Residential Functionality : Apartments

Transforming life in Mostakbal City

Aria came to life through the collaboration of LMD with Manazel, an upscale residential development. It challenges the conventional notion of confined apartments with a refined concept of smart expansive homes.

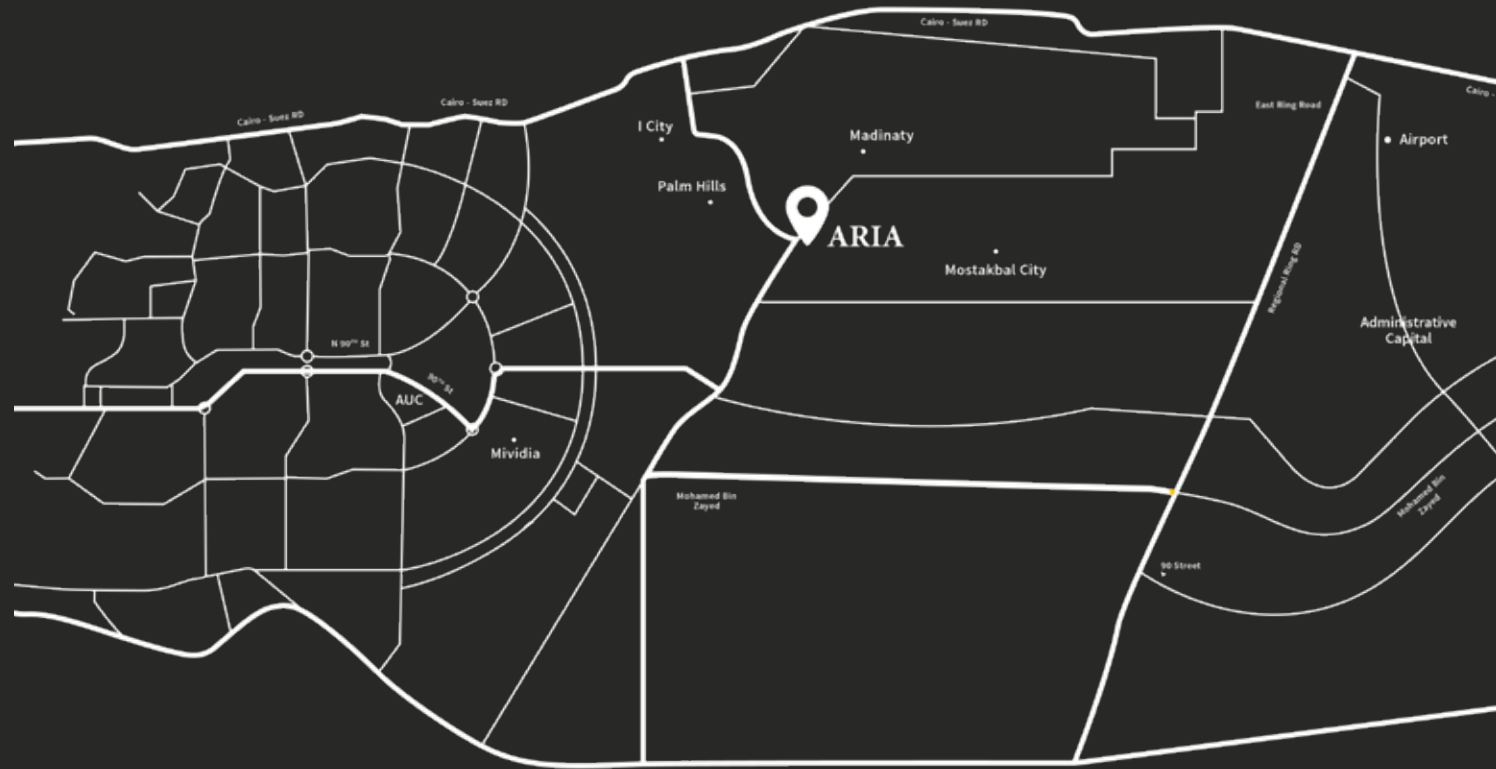
Aria evokes a unique sense of uninterrupted freedom rooted in natural landscapes, inspired by elegant European environments, where public attraction points seamlessly blend in with lush pocket parks and safe playgrounds.

Aria mindfully reinvents apartment living to promote a savvy and functional lifestyle. It takes into consideration natural beauty, as well as daily recreation to enrich the lives of families and young couples.

ARIA

Intriguing Location

Aria enjoys a prudent location at the extension of New Cairo in Mostakbal City. A strategic location. Near the American University and the Middle Ring Road. It lies only five minutes away from Suez Road with direct access to Madinaty and the neighboring New Administrative Capital.



ARIA



Total Land Area

141,640 m²

REAL SHOT

ARIA



ZOYA

GHAZALA BAY

[For more information
about the project
progress click here](#)



Profound Coastal Simplicity

Sea-front Sophistication

In the heart of Ghazala Bay in North Coast

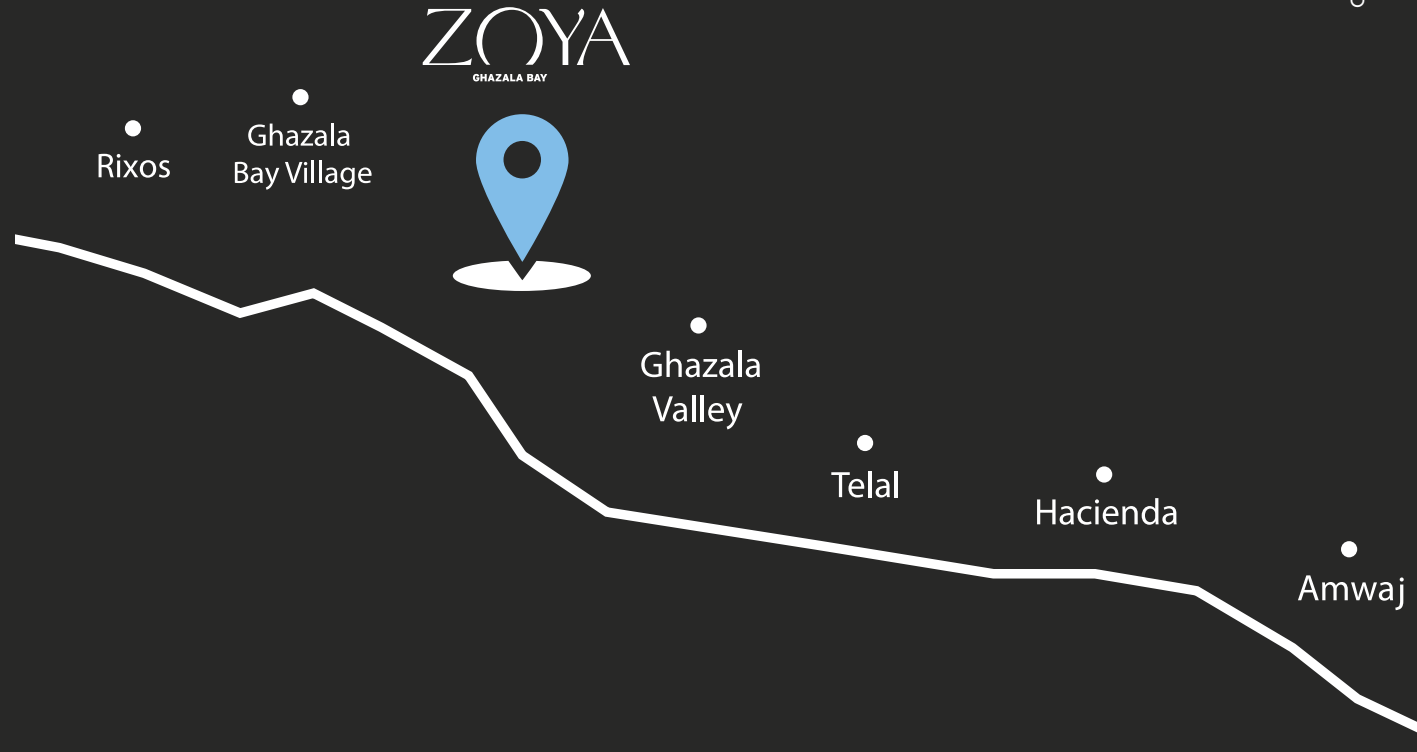
Masterplanned by the internationally-acclaimed Alchemy and Archi View, Zoya Ghazala Bay is a floating bay-front paradise introducing waterfront homes. An exclusive luxury unprecedented elsewhere.

Developed in absolute harmony with the North Coast's velvet sands and dazzling shades of blue. The heavenly development evokes a tranquil ambiance through lush cascading levels & and free-form lakes, allowing residents to privately experience the intimacy and tranquillity of the Mediterranean from the comfort of their terrace.

Zoya Ghazala Bay gifts a signature collection of fully-finished water front homes, boasting panoramic sea and lagoon views surrounded by exquisite dining experiences, private access to a lively beach hub & an elegant clubhouse, fun-packed water activities, rejuvenating spa treatments, and distinctive hotel hospitality.

Intriguing Location

Zoya lies at the strategic Ghazala Bay destination, on the 142 km Alex to Matrouh Road. Ghazala Bay's pristine coastline is a pleasant 3-hour drive from Cairo. A prime location bustling with life between Telal and Ghazala Bay Rixos projects.



ZOYA

Total Land Area

148 acres

Types of Units

**Standalone Villas, One Story Villas,
Twin Houses, Town Houses, Chalets & Cabanas**



ZOYA

GHAZALA BAY



Diagrams are not to scale and are for illustrative purposes only. All rendering & landscaping visuals, materials, facades are for indicative purposes only, and subject to change. LMD reserves the right to make non-fundamental changes to the design provided herein.

CONTINENTAL

TOWER



The Beating Heart of Dubai's Marina

Luxury Living

At New Heights, Dubai Delivered and fully liveable

The Continental Tower is LMD's first transformational project in Dubai. An elevated outlook on luxury living, rising to a staggering height of 29 floors to boast panoramic terraces that invite magical views of Dubai's Marina indoors while providing the perfect stay for those wishing to explore the city's abundant offerings on foot.

The development is just 4 minutes from the spirited waterfront strip of The Walk JBR, 9 minutes from Dubai Mall, and 11 minutes from Palm Jumeriah.

Residents enjoy limitless access to a cutting-edge gym with breathtaking views, relaxation by sparkling fountains during the daytime, and energizing in a shimmering swimming pool with a vibrant pool bar. The project provides direct access to the marina alongside ten signature retail outlets.



CONTINENTAL TOWER

Total Built up Area **443,000 m²**

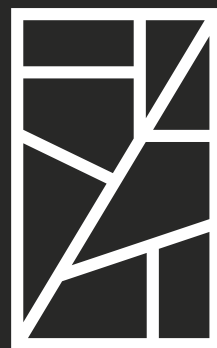
Types of Units **Duplexes and Apartments**

Number of Units **196**

CONTINENTAL

TOWER





RUKAN



Where Everyone Belongs

Authentic Residential Living

Re-envisaging Dubai Land

LMD introduces a modern perspective on authentic Arabian culture. It transforms the traditional into a welcoming reality of inviting originality with Rukan’s exquisite homes.

Rukan caters to the diverse needs of different lifestyles with its varied space options and highly customizable approach. The project is in absolute harmony with its natural surroundings. It dedicates only 30% to built-up areas to envelop residents in uninterrupted greenery wherever they turn.

Elegantly appointed customizable villas, twin houses, and spacious apartments are all complemented by pools, running tracks, gyms, a bustling community center, and nurseries & schools for the peace of mind of every family.

Rukan crowns a central location in the heart of Wadi Safa, Dubai Land. It enjoys direct access to the thriving Arabian Ranches and Mudun.

RUKAN



Total Land Area

250,838 m²

Types of Units

Villas, Twin Houses and Apartments

RUKAN



RUKAN



Diagrams are not to scale and are for illustrative purposes only. All rendering & landscaping visuals, materials, facades are for indicative purposes only, and subject to change. LMD reserves the right to make non-fundamental changes to the design provided herein.



Dubai Marina



A Towering Symbol of Elegance

Prime location on the vibrant locale of Dubai Marina

Experience comfort with breathtaking views at Dubai Marina, Dubai

Indulge in the ultimate lifestyle experience with Marina Living, where every moment is elevated to new heights of luxury and sophistication. With a 19-floor tower boasting breathtaking views from every direction, this stunning residence is the perfect sanctuary to escape the hustle and bustle of city life.

Located in Dubai Marina, one of the last remaining plots in this sought-after coastal community, Marina Living offers an unrivaled location, with easy access to major city attractions, world-class dining, and entertainment options. Whether you prefer to travel by water taxi or tram, the exceptional transportation network connects you seamlessly to the wider city, making Marina Living the perfect choice for those seeking the ultimate in convenience and extravagance.

MARINA LIVING

MARINA LIVING

Dubai Marina

Diagrams are not to scale and are for illustrative purposes only. All rendering & landscaping visuals, materials, facades are for indicative purposes only, and subject to change. LMD reserves the right to make non-fundamental changes to the design provided herein.

Muntaner 91

BARCELONA



Pure City Living

Upscale Residential Living

In Barcelona, Spain Delivered and fully livable

Muntaner 91 is LMD's visionary outlook on pure city living. It captures Barcelona's year-round lively vibes radiating from the neighboring Gothic Quarter.

Muntaner 91 is just a few steps away from the infamous Barcelona beach, as well as a variety of upscale outings, spanning fresco bars and fine dining restaurants. The location provides seamless access to a bus station for ultimate convenience. Spacious luxury apartments, plush amenities, and intricate details comprise your European-inspired lifestyle in a world-class address like no other.

A contemporary building that proudly stands as a unique statement of European authenticity, fused with modern interiors to suit every eclectic lifestyle.

Muntaner 91

BARCELONA



ATHINES

BY THE SEA



Escape to A Paradise By the Sea

Athines By The Sea

A retreat in Athens, Greece with turquoise secrets

Athines By the Sea is a paradise that blends lavish dining with uninterrupted leisure, making every day feel like a summer escape. This year-round haven boasts four exquisite restaurants and beach bars, as well as fashionable shopping sprees. To keep you active and healthy, Athines By the Sea provides yoga, outdoor gyms, water sports, and tennis padel. With its signature sophisticated lounging and entertainment flair, it's the ultimate sun-kissed island retreat, where every moment feels like a slice of heaven.

Discover the pristine secrets of the turquoise crystal-clear water, topped with a stunning sandy crescent beach beneath the sun's golden rays, not to mention the most amazing sunsets, providing the most inspirational sights all wrapped up in a posh atmosphere that is difficult to top.

ATHINKS

BY THE SEA



Diagrams are not to scale and are for illustrative purposes only. All rendering & landscaping visuals, materials, facades are for indicative purposes only, and subject to change. LMD reserves the right to make non-fundamental changes to the design provided herein.

GREECE RESIDENTIAL PROJECTS



Your Gateway to A Greek Living

Nestled in the heart of Glyfada

A residential building in Greece that has it all.

Step right into the lap of luxury, the premier residential building that marries location and opulence. Nestled in the heart of Glyfada, this stunning building bears the moniker of its very own street, boasting a prime position that puts you a mere 10-minute stroll away from Glyfada Center and just a quick 7-minute jaunt to the shimmering shores of Voula Beach in Greece.

Its one-of-a-kind facility management service makes it a great serviced apartment for living or renting.

GREECE RESIDENTIAL PROJECTS

An architectural rendering of a modern residential building at dusk. The building features a mix of white, dark grey, and wood-slatted facades. It has curved balconies with glass railings and integrated LED lighting. A person is visible on one of the balconies. The building is surrounded by landscaped areas with trees and streetlights. The sky is a deep blue with some clouds.

Diagrams are not to scale and are for illustrative purposes only. All rendering & landscaping visuals, materials, facades are for indicative purposes only, and subject to change. LMD reserves the right to make non-fundamental changes to the design provided herein.

Contact us

Egypt Head Office & Showroom:

One Ninety - 90th Street South, New Cairo, Cairo, Egypt

Dubai Head Office:

Office P404, Ontario Tower,
Business Bay, Dubai - UAE

002 02 16295

info@lmd.com.eg

lmd.com.eg

LMD is all social

Now you can connect with us on your favourite social media platforms, and get instant notifications about our latest news and events.

Click on the icons below to subscribe to our pages and follow us.



LMD°