

ARCHIMIDOUS⁵

LMD°

ARCHIMIDOUS⁵

LMD°

Greece; where history and beauty converge



Being a country with a rich history and timeless beauty, *Greece* has always been a destination that captivates both travelers and locals. With a breathtaking coastline that stretches across the *Mediterranean*, a rich cultural heritage, and some of the most vibrant cities, it is an unparalleled destination.

A long lasting journey

Embark on a seamless residency journey with Europe's fastest and most economical residency program. Through real estate investment you and your family secure a lasting visa. Benefit from the country's economic resurgence, tourism appeal, and government incentives, driven by fiscal discipline and growth potential. Investors enjoy promising returns with the constant demand for accommodation and rental properties, ensuring consistent income streams and a high-quality lifestyle.



Ano glyfada; embracing contemporary elegance



Situated on the enchanting south coast of *Attica*, *Ano-Glyfada* emerges as a haven of urban sophistication. With its vibrant atmosphere, lively entertainment, intriguing shopping, and sun-kissed beaches, *Ano-Glyfada* captures the essence of modern luxury. Life here unfolds as a harmonious symphony of relaxation and vitality, where each moment is a celebration of the next experiences. *Ano-Glyfada* embodies a lifestyle where coastal urban meets contemporary elegance, making every day a memorable occasion.

Map of Greece



Elevate your lifestyle

Step into the realm of *Archimidous 5*, a symphony of Greek elegance merging seamlessly with modern luxury. At the heart of Archimidous lies an unwavering commitment to elevate your lifestyle. This building features modern services, solar panels, and advanced heating/cooling systems, ensuring an eco-friendly living experience and an elevated lifestyle. Join us and elevate your lifestyle to new heights at *Archimidous 5*.



Diagrams are not to scale and are for illustrative purposes only. All rendering & landscaping visuals, materials, facades are for indicative purposes only, and subject to change. LMD reserves the right to make non-fundamental changes to the design provided herein.

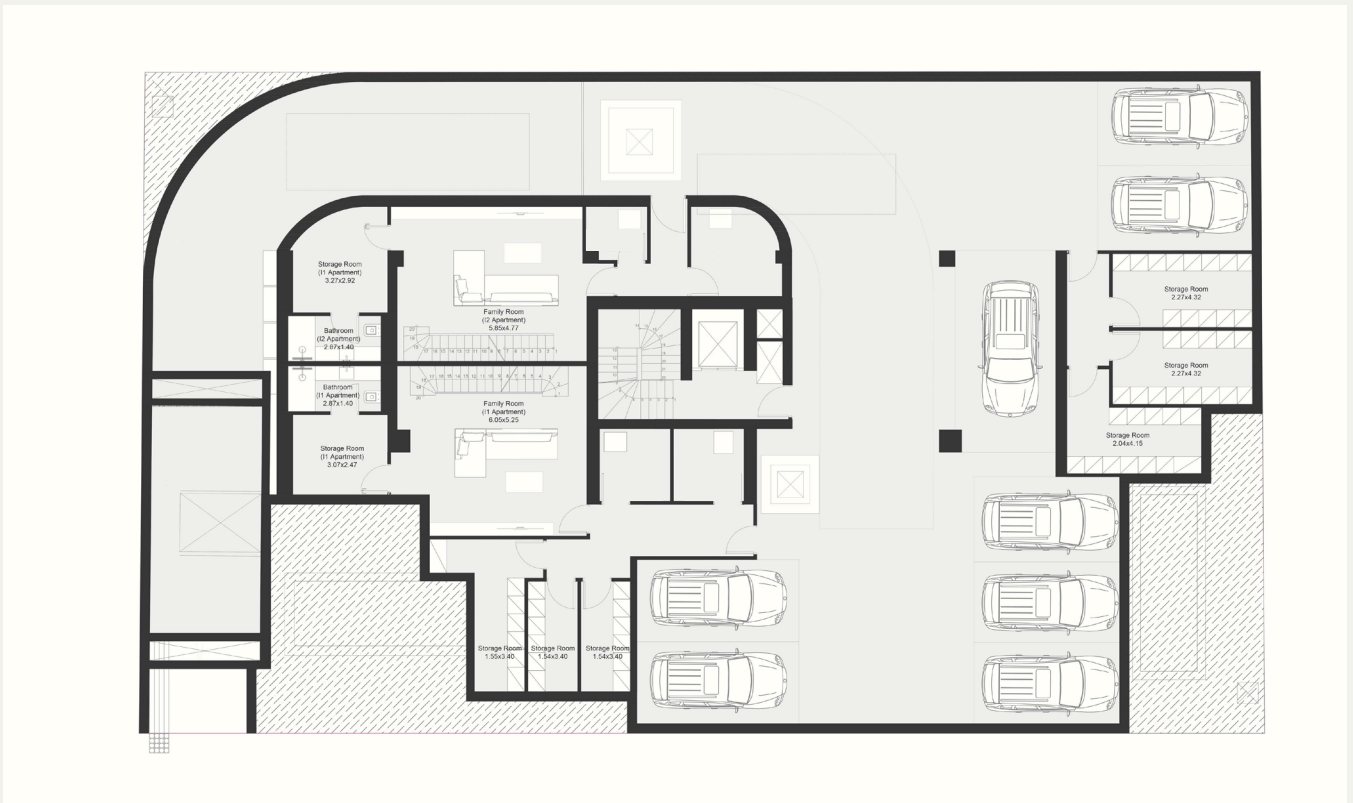
Floor *plans*



Diagrams are not to scale and are for illustrative purposes only. All rendering & landscaping visuals, materials, facades are for indicative purposes only, and subject to change. LMD reserves the right to make non-fundamental changes to the design provided herein.

Basement floor - i1 & i2

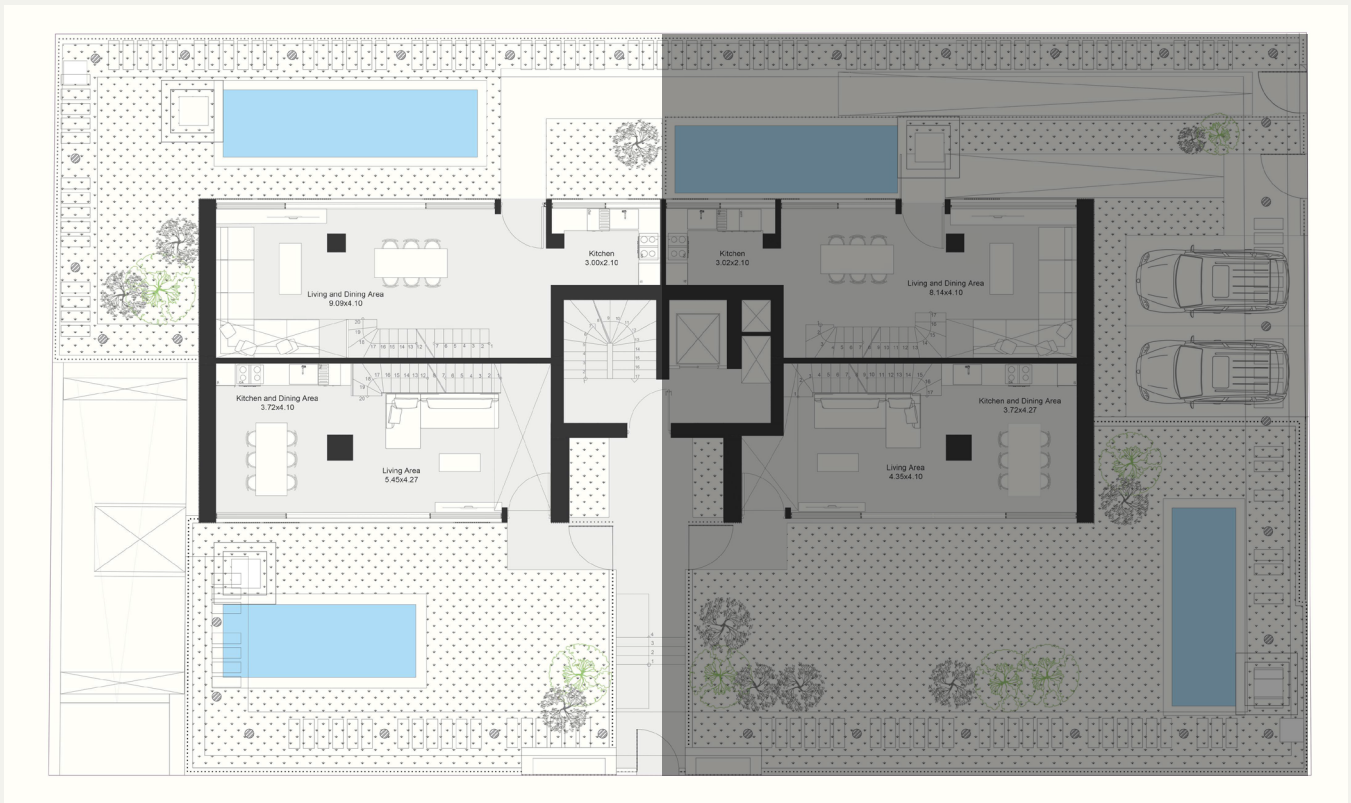
TOTAL BASEMENT AREA: 589,37M²



Diagrams are not to scale and are for illustrative purposes only. All rendering & landscaping visuals, materials, facades are for indicative purposes only, and subject to change. LMD reserves the right to make non-fundamental changes to the design provided herein.

Ground floor - type 1

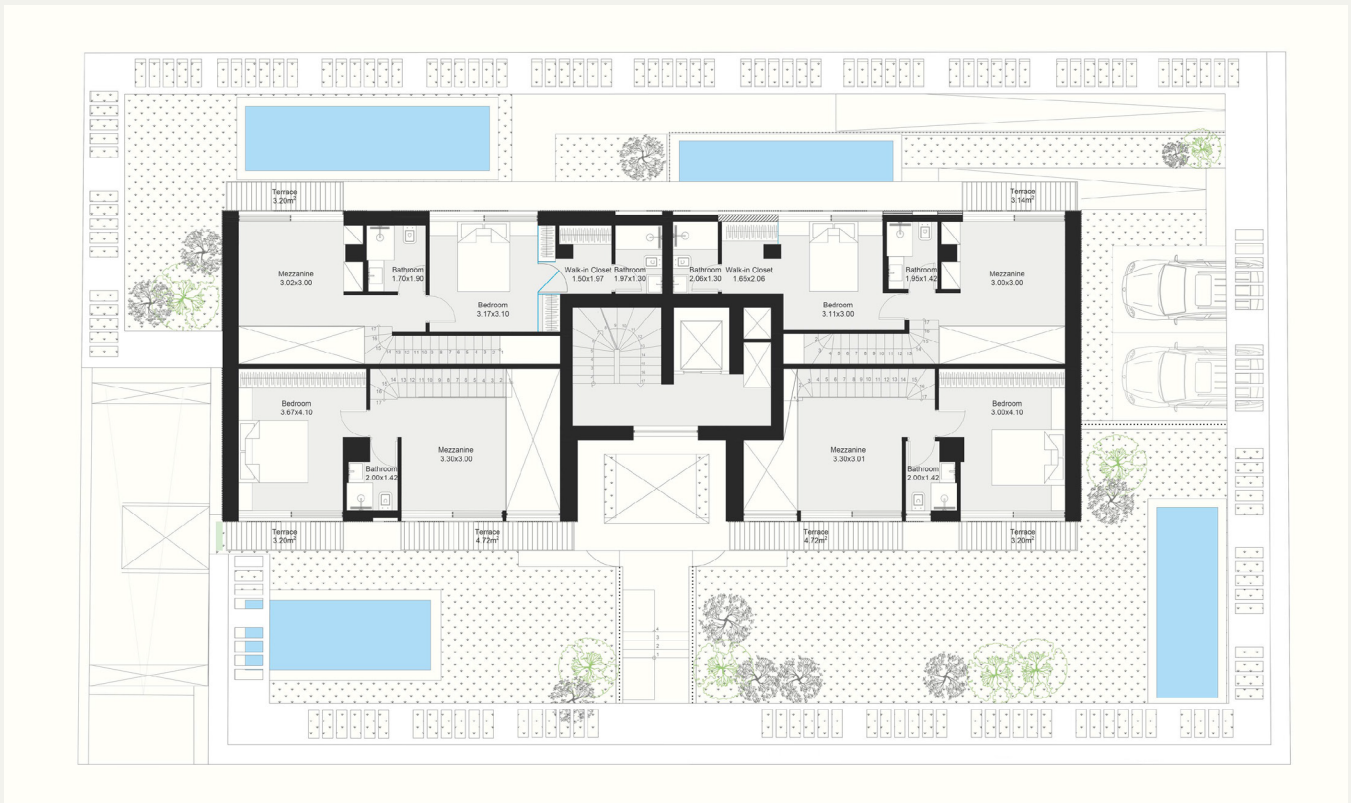
APARTMENT I1 AREA: 131.05M2
 APARTMENT I2 AREA: 148.61 M2
 APARTMENT I3 AREA: 81.11 M2
 APARTMENT I4 AREA: 81.11 M2



Diagrams are not to scale and are for illustrative purposes only. All rendering & landscaping visuals, materials, facades are for indicative purposes only, and subject to change. LMD reserves the right to make non-fundamental changes to the design provided herein.

Mezzanine floor

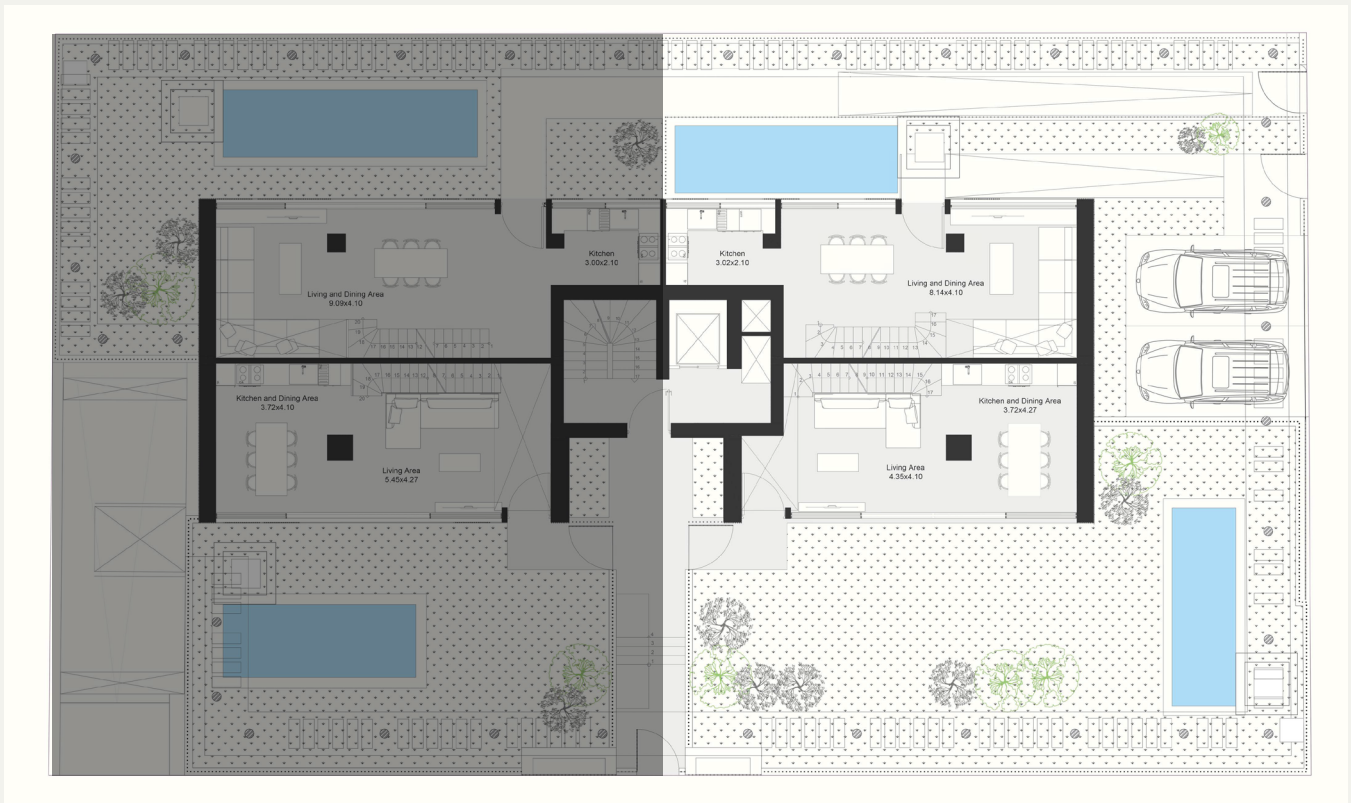
TOTAL MEZZANINE AREA: 189,52M²



Diagrams are not to scale and are for illustrative purposes only. All rendering & landscaping visuals, materials, facades are for indicative purposes only, and subject to change. LMD reserves the right to make non-fundamental changes to the design provided herein.

Ground floor - type 2 - i3 & i4

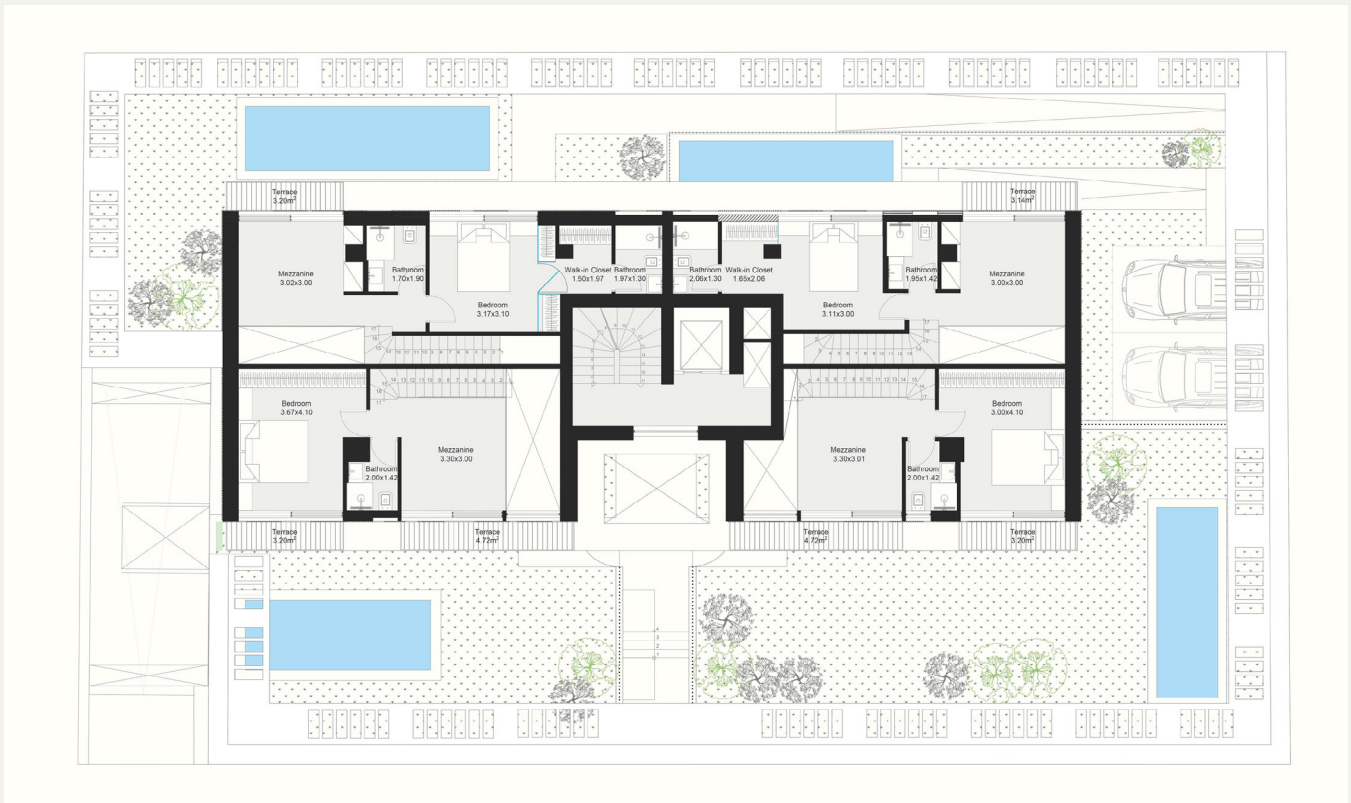
APARTMENT I1 AREA: 131.05M2
 APARTMENT I2 AREA: 148.61 M2
 APARTMENT I3 AREA: 81.11 M2
 APARTMENT I4 AREA: 81.11 M2



Diagrams are not to scale and are for illustrative purposes only. All rendering & landscaping visuals, materials, facades are for indicative purposes only, and subject to change. LMD reserves the right to make non-fundamental changes to the design provided herein.

Mezzanine floor

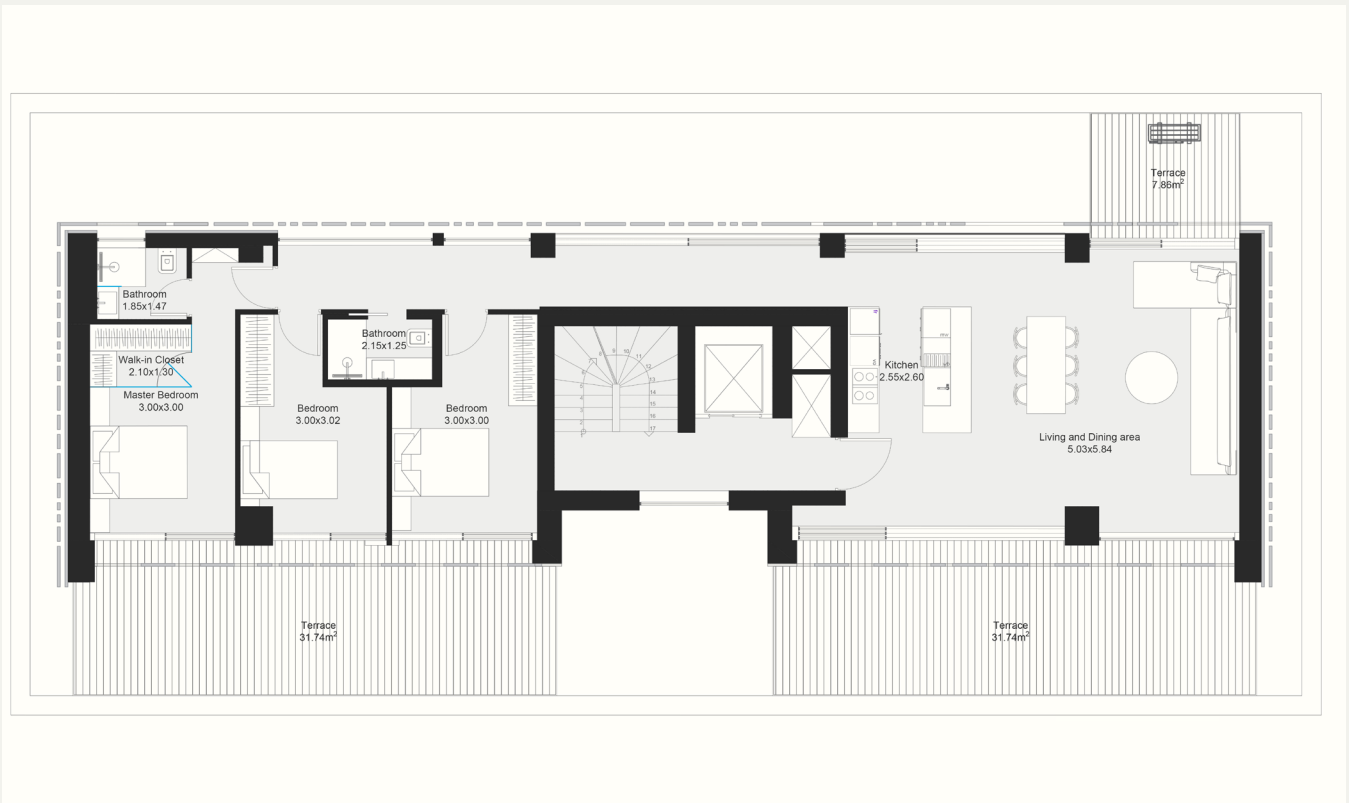
TOTAL MEZZANINE AREA: 189,52M²



Diagrams are not to scale and are for illustrative purposes only. All rendering & landscaping visuals, materials, facades are for indicative purposes only, and subject to change. LMD reserves the right to make non-fundamental changes to the design provided herein.

First floor

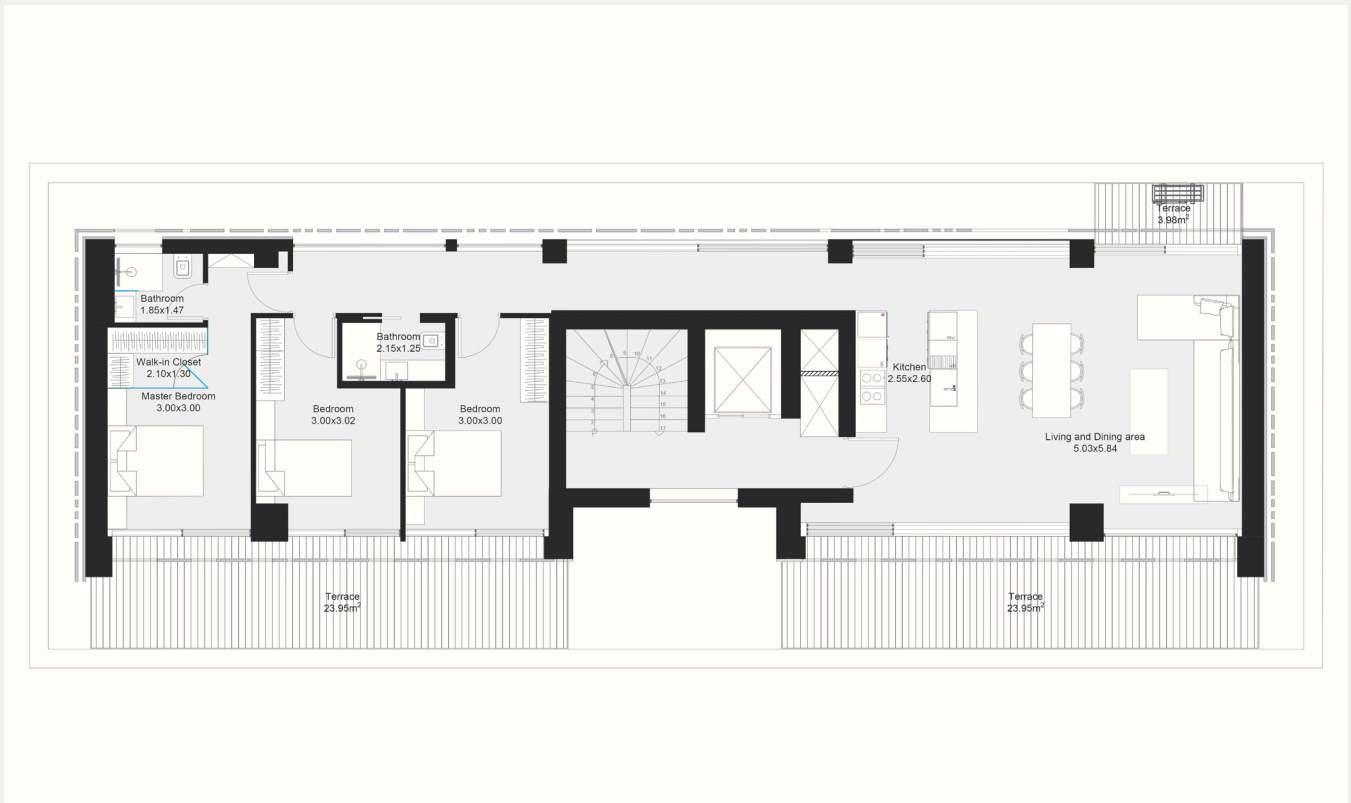
TOTAL FIRST FLOOR AREA: 132,89M²



Diagrams are not to scale and are for illustrative purposes only. All rendering & landscaping visuals, materials, facades are for indicative purposes only, and subject to change. LMD reserves the right to make non-fundamental changes to the design provided herein.

Second floor

TOTAL AREA: 132,89M²

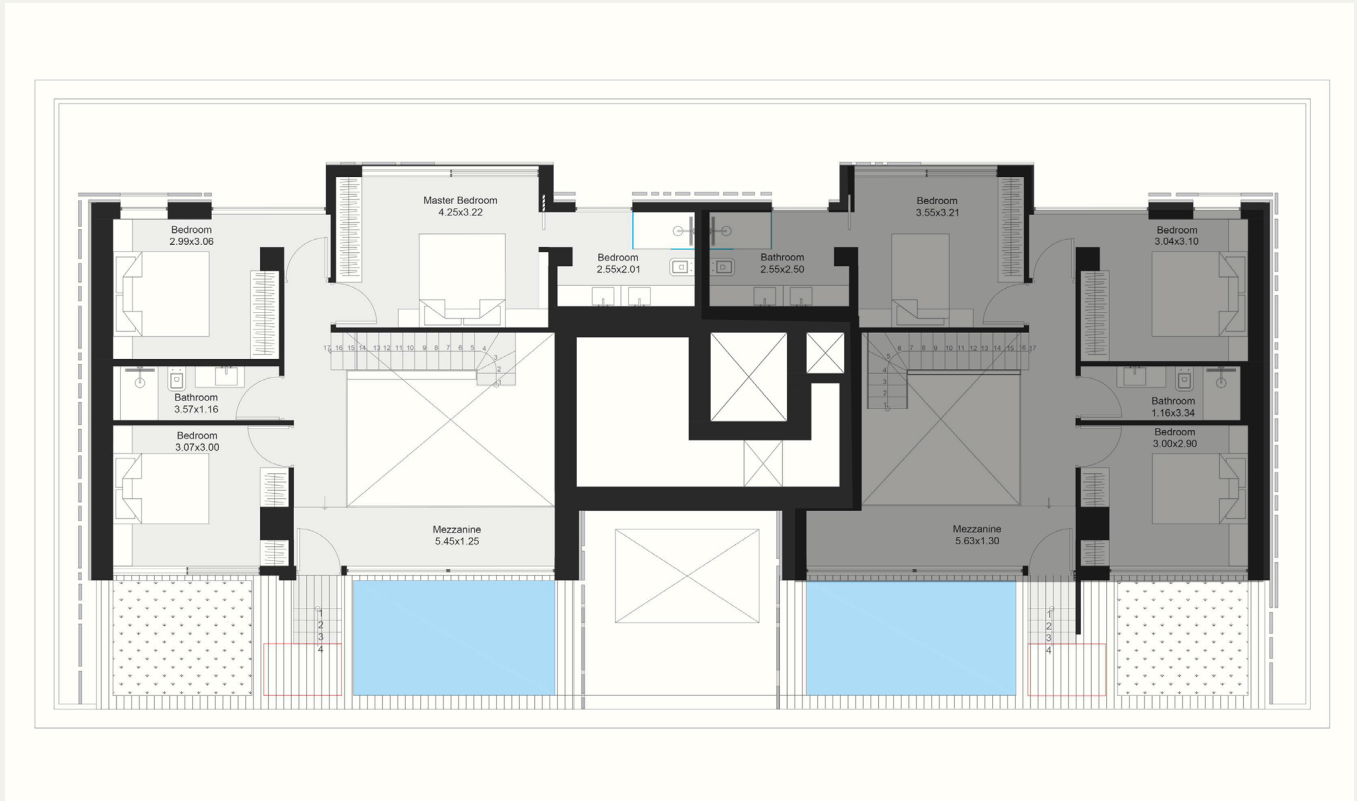
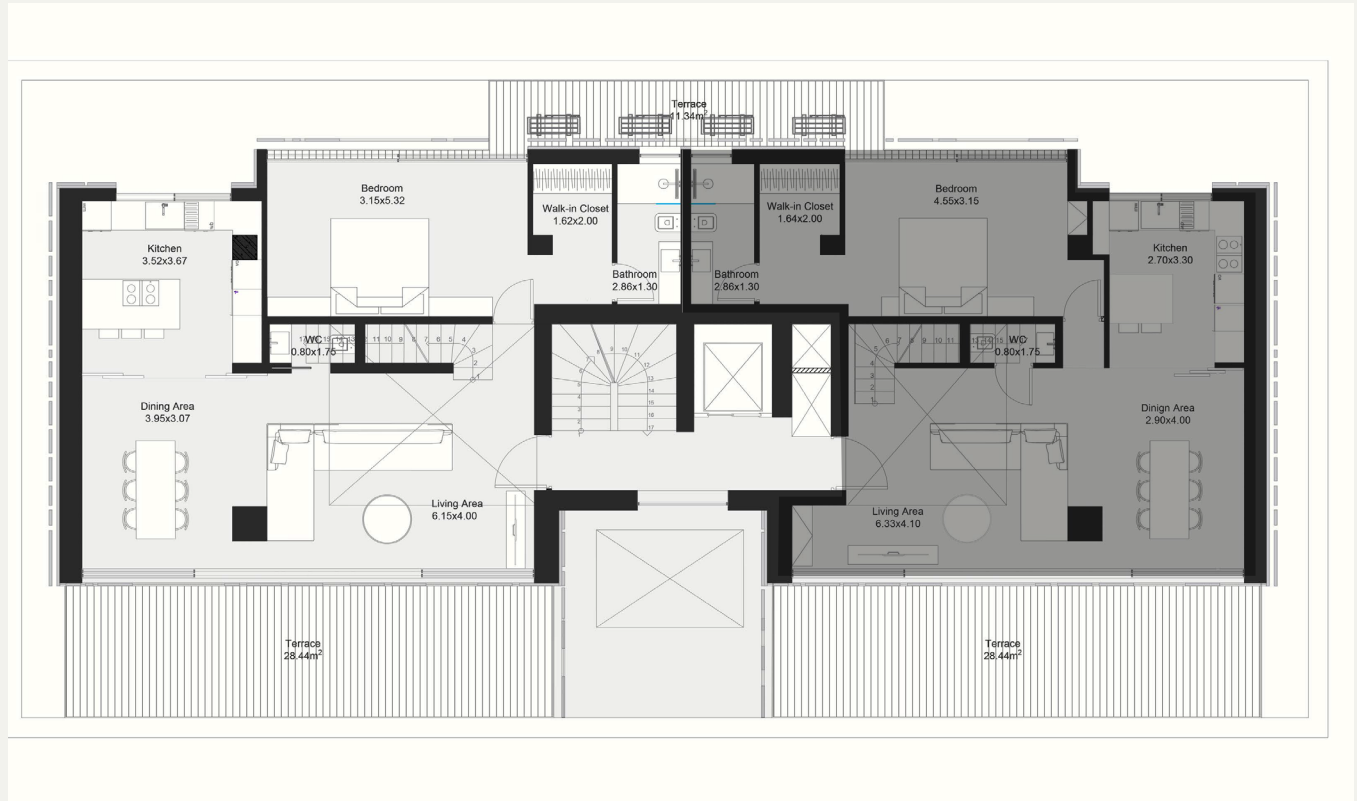


Diagrams are not to scale and are for illustrative purposes only. All rendering & landscaping visuals, materials, facades are for indicative purposes only, and subject to change. LMD reserves the right to make non-fundamental changes to the design provided herein.

Third floor & Loft

APARTMENT D1 AREA: 169,63M²

TOTAL LOFT AREA: 169,01M²

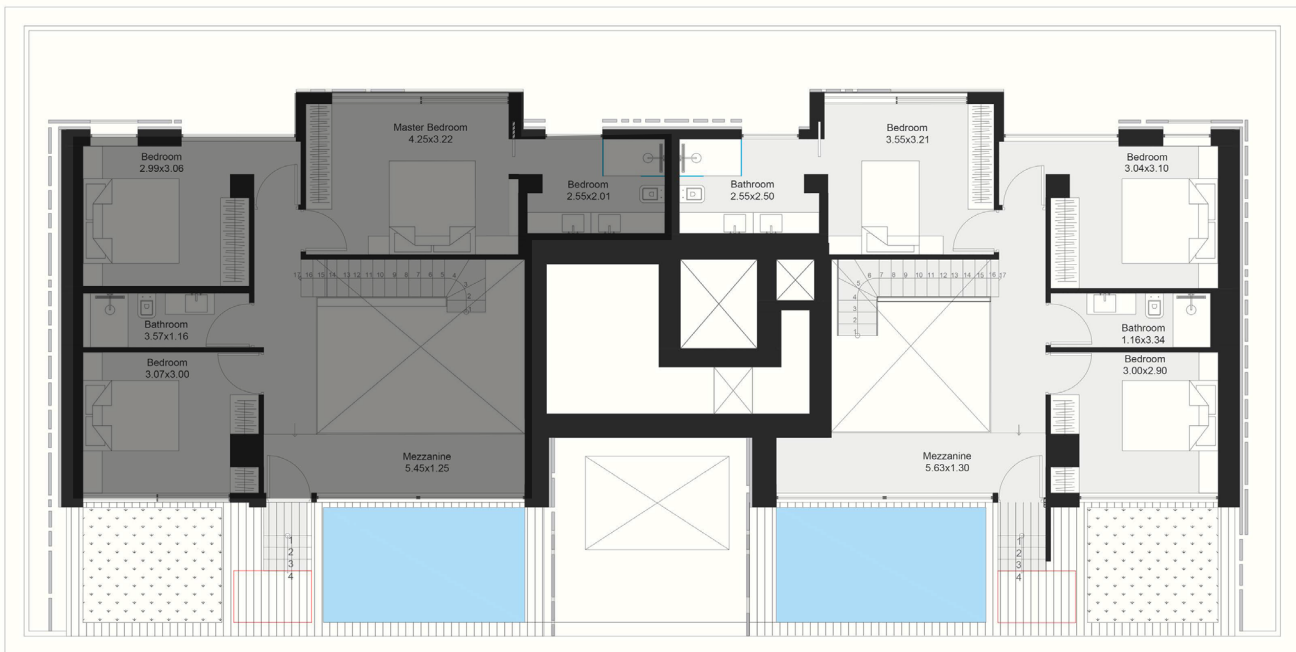
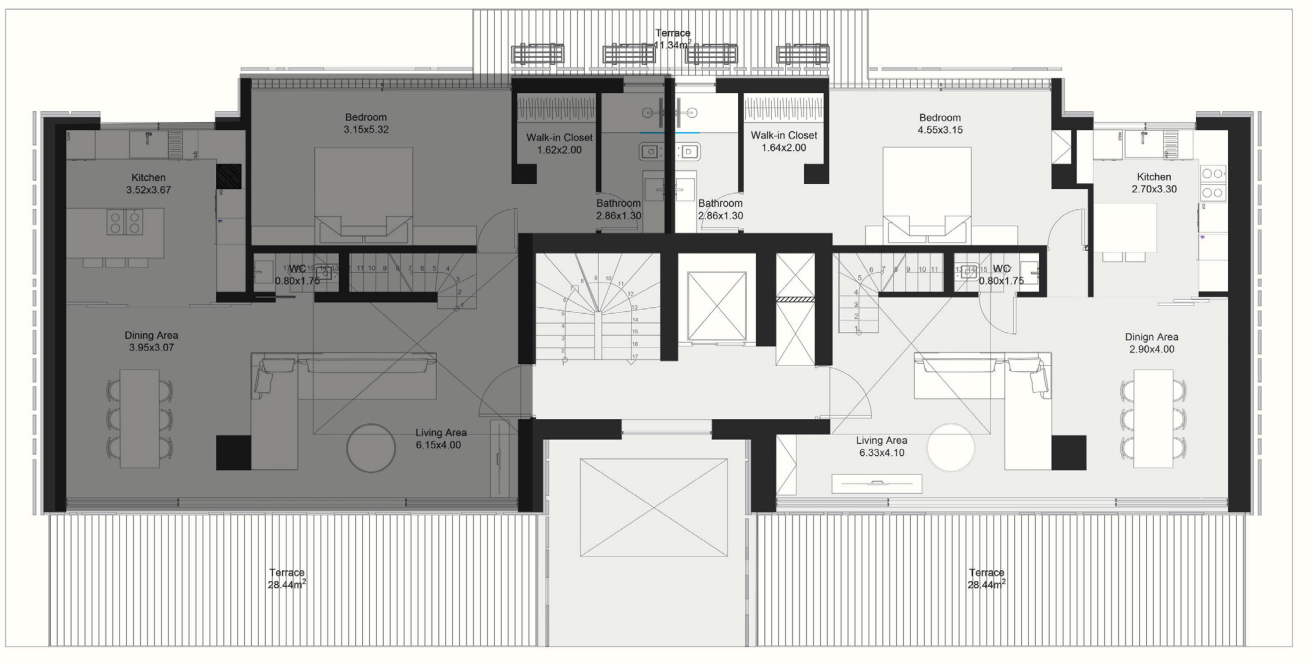


Diagrams are not to scale and are for illustrative purposes only. All rendering & landscaping visuals, materials, facades are for indicative purposes only, and subject to change. LMD reserves the right to make non-fundamental changes to the design provided herein.

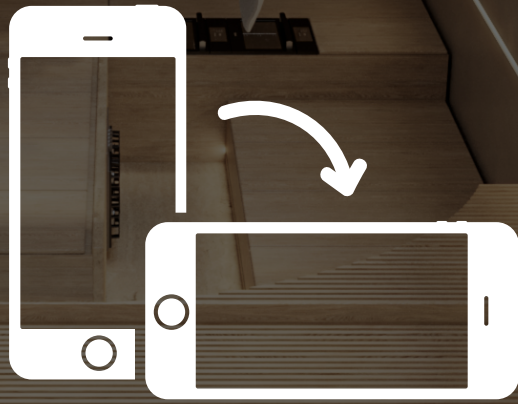
Third floor & Loft

APARTMENT D2 AREA: 159M²

TOTAL LOFT AREA: 169,01M²



Diagrams are not to scale and are for illustrative purposes only. All rendering & landscaping visuals, materials, facades are for indicative purposes only, and subject to change. LMD reserves the right to make non-fundamental changes to the design provided herein.



**PLEASE ROTATE
YOUR PHONE!**



Diagrams are not to scale and are for illustrative purposes only. All rendering & landscaping visuals, materials, facades are for indicative purposes only, and subject to change. LMD reserves the right to make non-fundamental changes to the design provided herein.



Diagrams are not to scale and are for illustrative purposes only. All rendering & landscaping visuals, materials, facades are for indicative purposes only, and subject to change. LMD reserves the right to make non-fundamental changes to the design provided herein.



Diagrams are not to scale and are for illustrative purposes only. All rendering & landscaping visuals, materials, facades are for indicative purposes only, and subject to change. LMD reserves the right to make non-fundamental changes to the design provided herein.



Diagrams are not to scale and are for illustrative purposes only. All rendering & landscaping visuals, materials, facades are for indicative purposes only, and subject to change. LMD reserves the right to make non-fundamental changes to the design provided herein.



Diagrams are not to scale and are for illustrative purposes only. All rendering & landscaping visuals, materials, facades are for indicative purposes only, and subject to change. LMD reserves the right to make non-fundamental changes to the design provided herein.

studio

314

At *314 Design House*, design transforms into visionary artistry. As passionate creators of exceptional spaces, this experienced team brings your dreams to life. From kitchens to home offices, they turn ideas into reality, curating fine cabinetry, exquisite tiles, and quality textures. A studio for creativity, redefining the possibilities of design.



About **LMD** in *Greece*

LMD is taking its real estate expertise to new horizons in Greece with residential developments in Voula and Glyfada, tailored to the discerning market. We offer comprehensive services and consultations for those seeking permanent residency and citizenship.

Our influence spans diverse locales, meeting the demand for a wide collection of premier upscale properties throughout Greece.

Moreover, we have established a cutting-edge management company that utilizes advanced technology and hospitality expertise to maximize investment growth.

In partnership with

EPSILON
Greece

LMD's commitment to pioneering

LMD, the visionary behind *Archimidous 5*, introduces a portfolio of four exceptional residential boutique projects, complemented by the esteemed *Athines by the Sea*.

Together, they redefine the concept of luxury living in Greece. Revered for its selection of prime locations, LMD emerges as a dynamic force with a global perspective. Pioneering real estate markets transcending borders, LMD bridges local wisdom with international platforms, and vice versa. As an industry pioneer, LMD constantly seeks worldwide prominence while upholding its commitment to delivering unparalleled quality.

Greece offers prime investment potential for both locals and foreigners, ensuring a promising market landscape that aligns seamlessly with LMD's vision for excellence.



Asklipiou 67
In partnership with Netherfield Developments



Karaiskaki 15
In partnership with Epsilon Greece



Archimidous 5
In partnership with Epsilon Greece



Omirou 31
In partnership with Netherfield Developments

Diagrams are not to scale and are for illustrative purposes only. All rendering & landscaping visuals, materials, facades are for indicative purposes only, and subject to change. LMD reserves the right to make non-fundamental changes to the design provided herein.

LMD's projects



Greece

Athines By The Sea - Hospitality - Athens - Greece

Karaiskaki 15 - Residential - Athens - Greece

Asklipiou 67 - Residential - Athens - Greece

Omirou 31 - Residential - Athens - Greece

Archimidous 5 - Residential - Athens - Greece

Dubai, UAE

Continental Tower - Residential - Marina - Dubai - United Arab Emirates

Rukan - Mixed-use development & Residential - Dubai Land - Dubai - United Arab Emirates

Marina Living - Residential - Dubai Marina - AlJaddaf - Dubai - United Arab Emirates

Boutique XII - Residential - AlJaddaf - Dubai - United Arab Emirates

Boutique 23 - Residential - AlJaddaf - Dubai - United Arab Emirates

Egypt

STEI8HT - Mixed-use development & Residential - New Cairo

Eastside - Commercial Destination - New Cairo

One Ninety - Mixed-use development - (Commercial, Retail & Of ces) -

New Cairo W Residences Cairo - Branded Residences - New Cairo

Cairo Design District - Commercial & Hospitality - New Cairo

3'Sixty - Commercial (Retail, Of ces, Clinics) - Golden Square, New Cairo

Zoya - Second home - Coastal Living - Ghazala Bay, North Coast

Layan Residence - Residential - Golden Square, New Cairo

Aria - Residential - Mostakbal City, New Cairo

Barcelona, Spain

Muntaner 91 - Residential - Barcelona - Spain

Contact us

Greece Head Office:

Office No. 27-29,
2nd floor, Aggelou Metaxa St.
Glyfada, P.C.
16674

Egypt Head Office & Showroom:

One Ninety - 90th Street South,
New Cairo, Cairo, Egypt

Dubai Head Office:

Office No. 701 & 702,
7th Floor Anantara Downtown,
Business Tower, Business Bay, Dubai

002 02 16295

info@lmd.com.eg
lmd.com.eg

LMD is all social!

Now you can connect with us on your favourite social media platforms,
and get instant notifications about our latest news and events.

Click on the icons below to subscribe to our pages and follow us.



ARCHIMDOUS⁵

LMD^o

GREECE