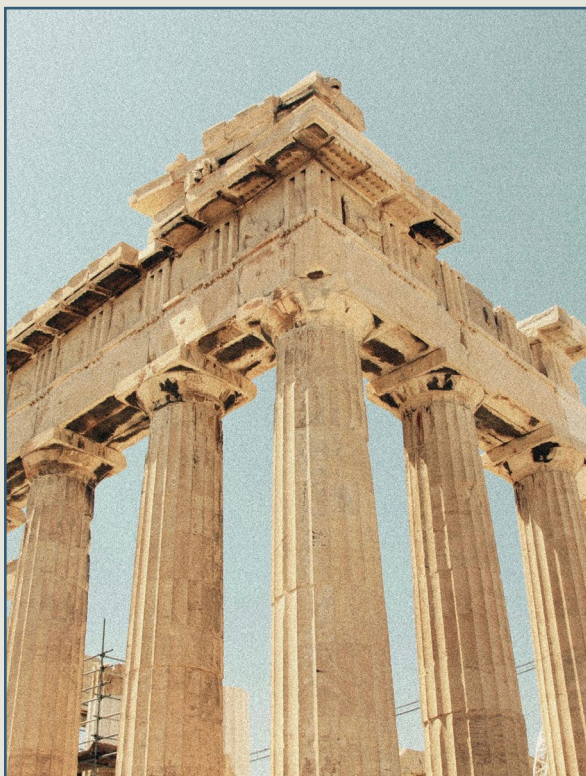
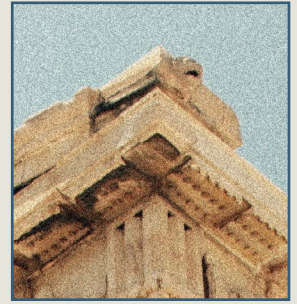


karaiskaki¹⁵

A photograph of a tropical courtyard. In the foreground, the long, slender fronds of a palm tree are silhouetted against a clear, light blue sky. The fronds are arranged in a fan-like pattern. Below them, a white wall is visible, with long, dark shadows of palm fronds cast across it from the left. The overall scene is bright and airy, with a strong sense of depth and light.

karaiskaki¹⁵

Greece - Where History and Beauty Converge



Being a country with a rich history and timeless beauty, Greece has always been a destination that captivates both travelers and locals. With a breathtaking coastline that stretches across the Mediterranean, a rich cultural heritage, and some of the most vibrant cities, it is an unparalleled destination.

Located along the Athenian Riviera, Voula stands as a testament to coastal charm and modern luxury. Having picturesque beaches, upscale boutiques, and vibrant dining scene, Voula offers the perfect blend of relaxation and refined living. In Voula, every moment is a celebration of the finer things in life

Seaside Luxury Living



Discover a blend of modern comfort and seaside charm at Karaiskaki 15. This building features modern services, solar panels and advanced heating/cooling systems, ensuring an eco-friendly living experience. Owners enjoy exclusive access to Athines by the Sea, and beautifully finished units with top-notch appliances. Karaiskaki 15 welcomes you to a one of a kind lifestyle.

An unwavering dedication to architectural innovation and timeless design, our team of experts at Karaiskaki 15 brings a wealth of experience to redefine modern living. Our commitment to excellence drives us to deliver residences that inspire and elevate.





Floor *plans*



Ground floor - GR1

Total Area: 179,55 sq.m.
Bedrooms: 2
Parking Spaces: 2
Basement: 45,56 sq.m.
Private Garden: 237.14 sq.m.
(including pool area)



Diagrams are not to scale and are for illustrative purposes only. All rendering & landscaping visuals, materials, facades are for indicative purposes only, and subject to change. LMD reserves the right to make non-fundamental changes to the design provided herein.

KKMK ARCHITECTS

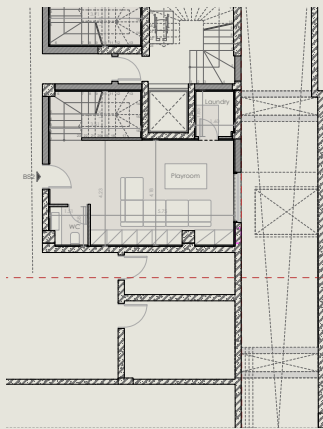


Diagrams are not to scale and are for illustrative purposes only. All rendering & landscaping visuals, materials, facades are for indicative purposes only, and subject to change. LMD reserves the right to make non-fundamental changes to the design provided herein.

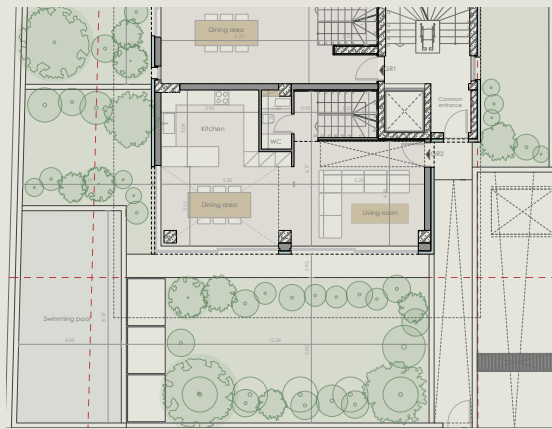
KKMK ARCHITECTS

Ground floor - GR2

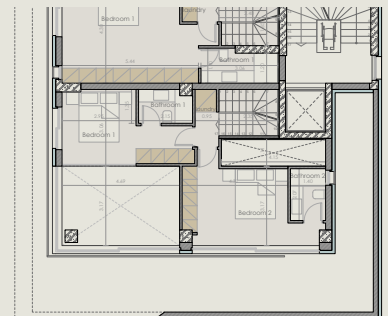
Total Area: 169,53 sq.m.
Bedrooms: 2
Parking Spaces: 2
Basement: 50,11 sq.m.
Private Garden: 165.83 sq.m.
(including pool area)



Basement Level



GroundFloor Level



Mezzanine

Diagrams are not to scale and are for illustrative purposes only. All rendering & landscaping visuals, materials, facades are for indicative purposes only, and subject to change. LMD reserves the right to make non-fundamental changes to the design provided herein.

KKMK ARCHITECTS

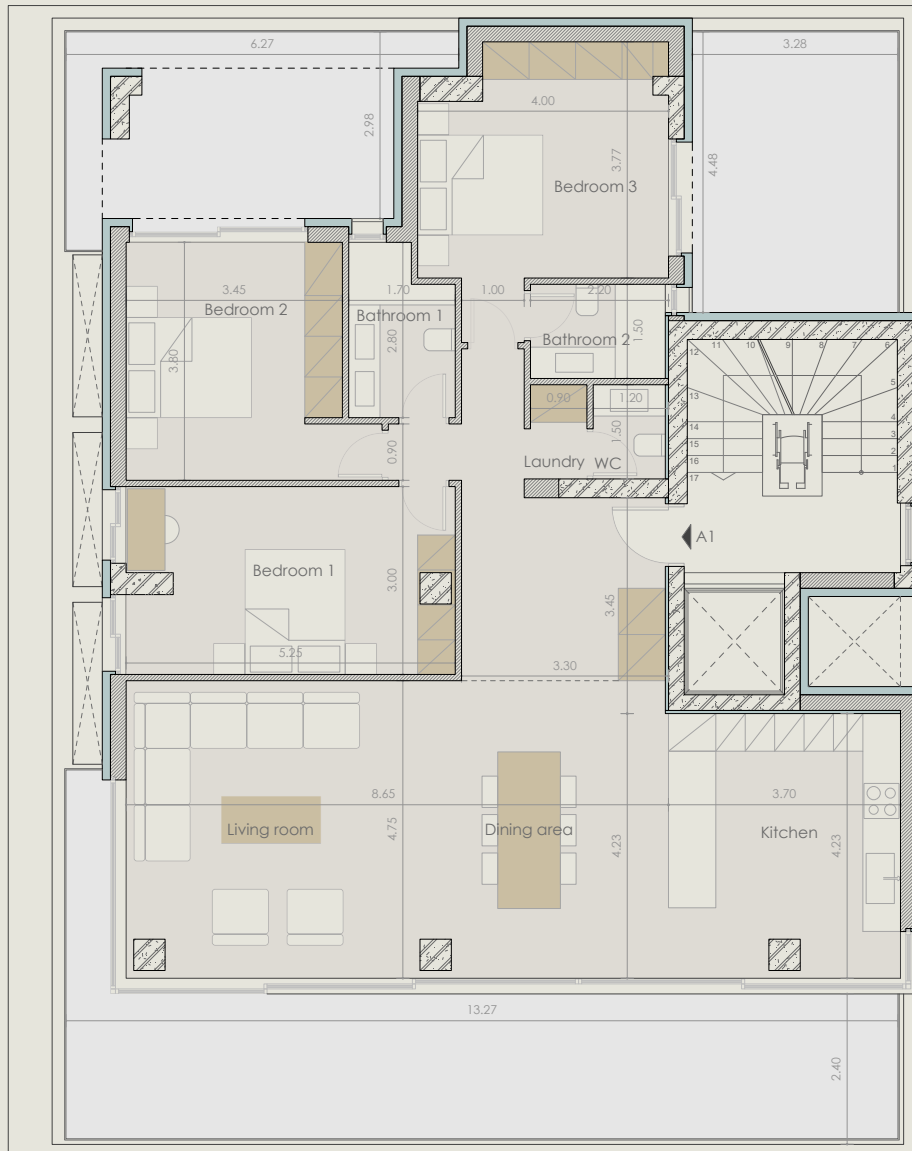


Diagrams are not to scale and are for illustrative purposes only. All rendering & landscaping visuals, materials, facades are for indicative purposes only, and subject to change. LMD reserves the right to make non-fundamental changes to the design provided herein.

KKMK ARCHITECTS

First floor A

Total Area: 149,51 sq.m.
Bedrooms: 3
Parking Spaces: 1
Basement: 11,43 sq.m.



Diagrams are not to scale and are for illustrative purposes only. All rendering & landscaping visuals, materials, facades are for indicative purposes only, and subject to change. LMD reserves the right to make non-fundamental changes to the design provided herein.

KKMK ARCHITECTS

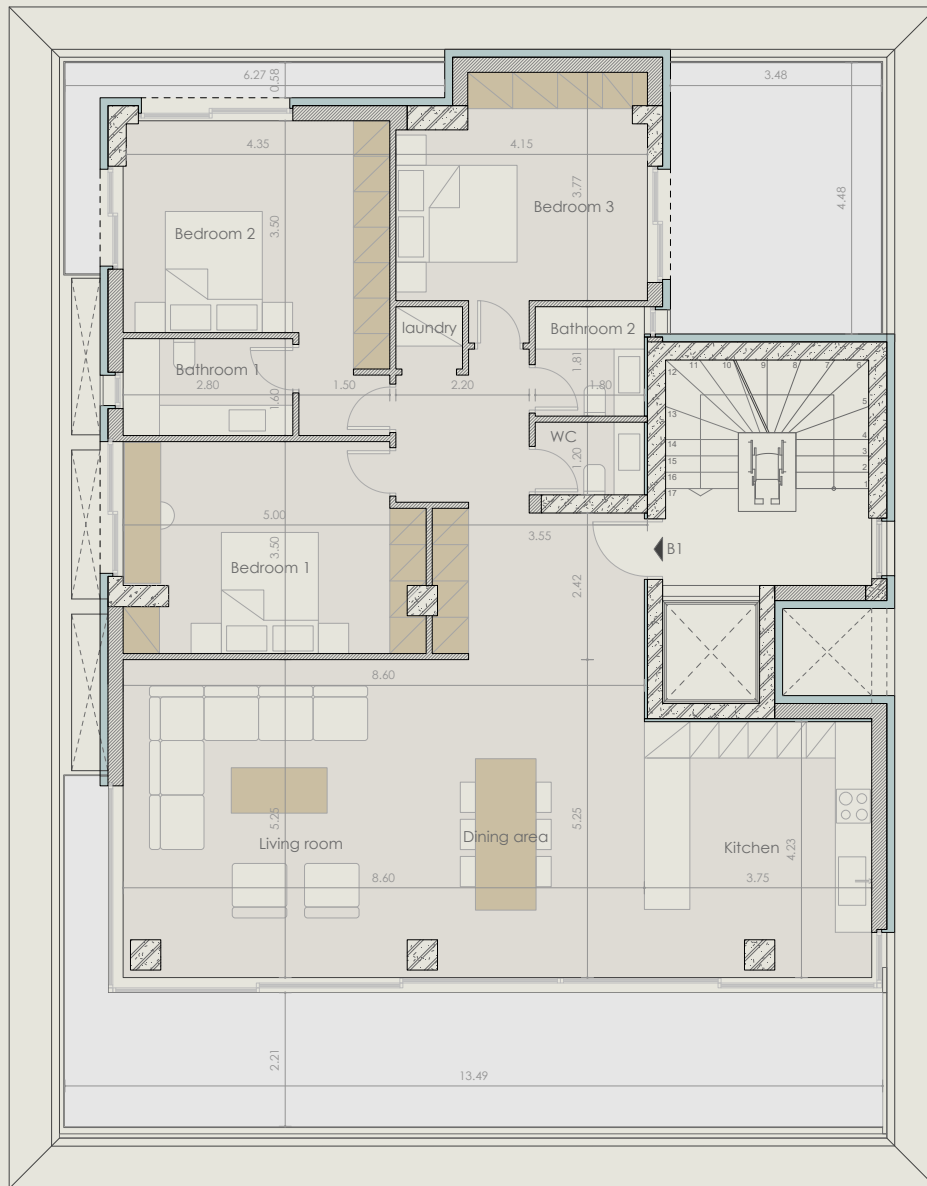


Diagrams are not to scale and are for illustrative purposes only. All rendering & landscaping visuals, materials, facades are for indicative purposes only, and subject to change. LMD reserves the right to make non-fundamental changes to the design provided herein.

KKMK ARCHITECTS

Second floor

Total Area: 160,82 sq.m.
Bedrooms: 3
Parking Spaces: 1
Basement: 16,92 sq.m.



Diagrams are not to scale and are for illustrative purposes only. All rendering & landscaping visuals, materials, facades are for indicative purposes only, and subject to change. LMD reserves the right to make non-fundamental changes to the design provided herein.

KKMK ARCHITECTS



Diagrams are not to scale and are for illustrative purposes only. All rendering & landscaping visuals, materials, facades are for indicative purposes only, and subject to change. LMD reserves the right to make non-fundamental changes to the design provided herein.

KKMK ARCHITECTS

Third floor

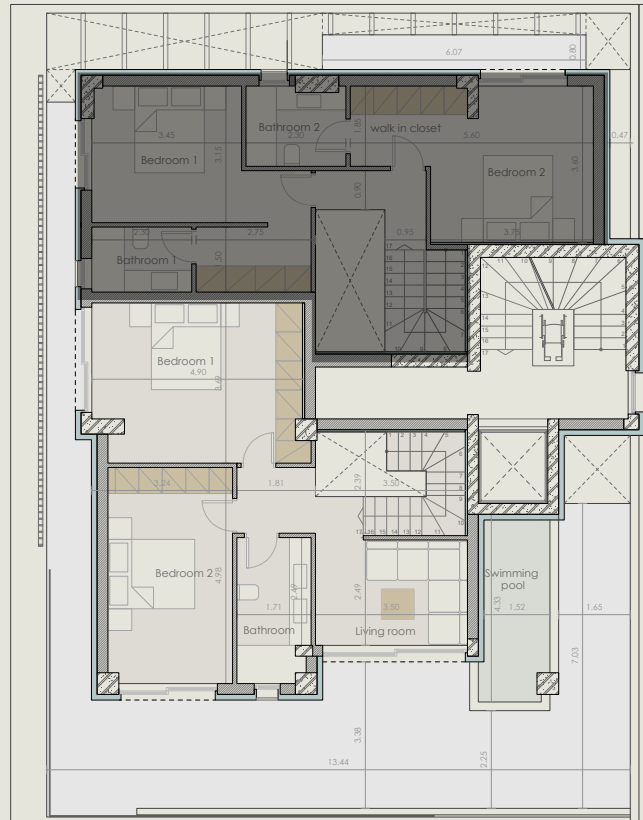
Maisonette *C1*

Total Area: 165,99 sq.m.

Bedrooms: 3

Parking Spaces: 1

Basement: 15,00 sq.m.



Diagrams are not to scale and are for illustrative purposes only. All rendering & landscaping visuals, materials, facades are for indicative purposes only, and subject to change. LMD reserves the right to make non-fundamental changes to the design provided herein.

KKMK ARCHITECTS

Third floor

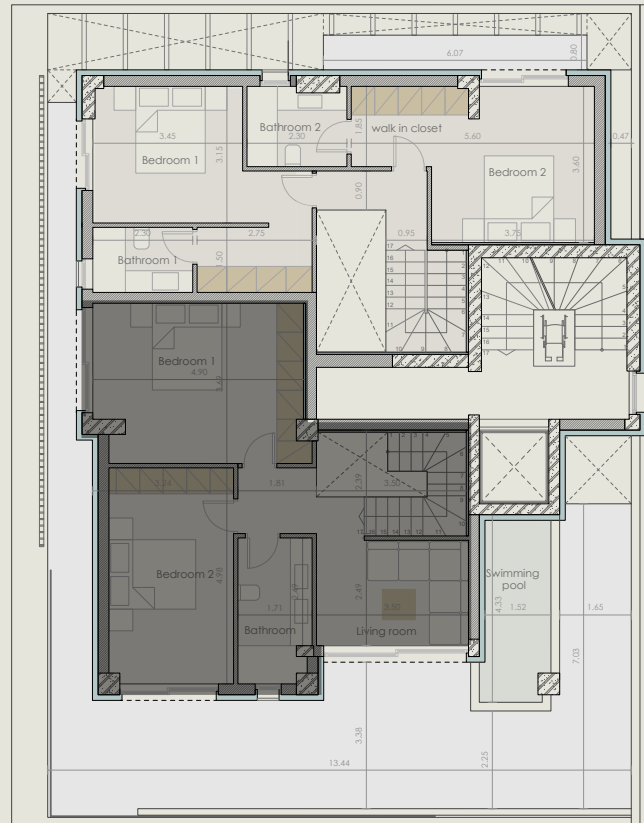
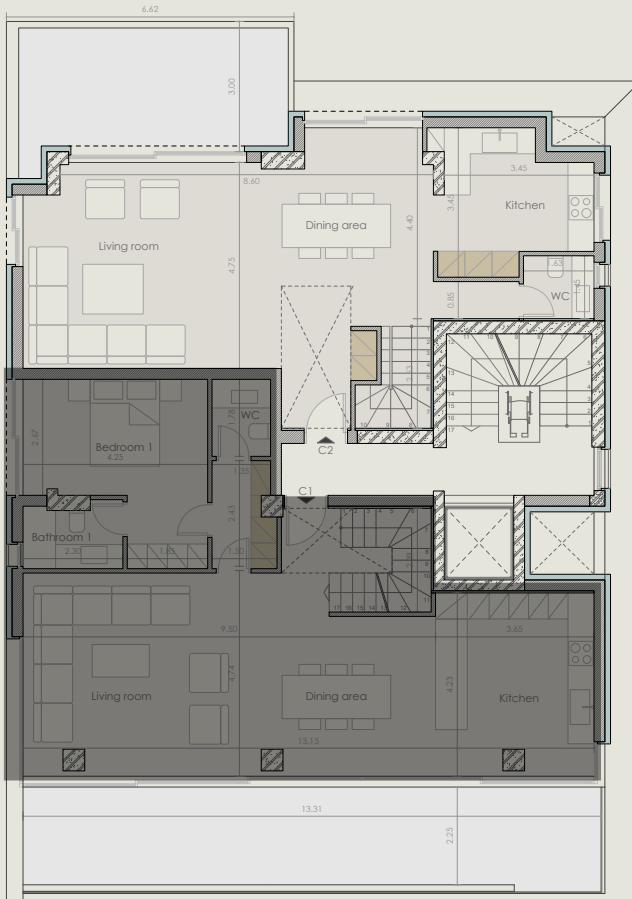
Maisonette C2

Total Area: 137,08 sq.m.

Bedrooms: 2

Parking Spaces: 1

Basement: 10,10 sq.m.



Diagrams are not to scale and are for illustrative purposes only. All rendering & landscaping visuals, materials, facades are for indicative purposes only, and subject to change. LMD reserves the right to make non-fundamental changes to the design provided herein.

KKMK ARCHITECTS



Diagrams are not to scale and are for illustrative purposes only. All rendering & landscaping visuals, materials, facades are for indicative purposes only, and subject to change. LMD reserves the right to make non-fundamental changes to the design provided herein.

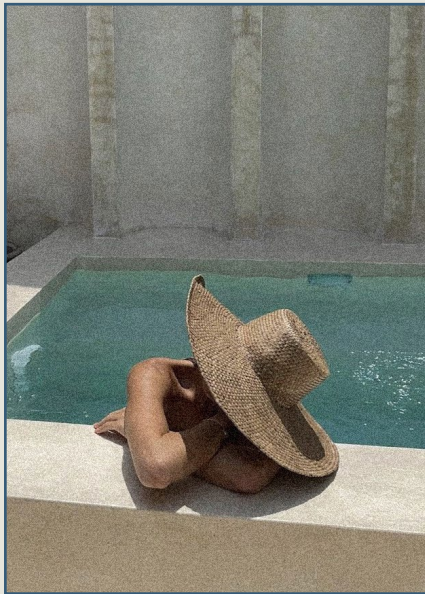
KKMK ARCHITECTS



Diagrams are not to scale and are for illustrative purposes only. All rendering & landscaping visuals, materials, facades are for indicative purposes only, and subject to change. LMD reserves the right to make non-fundamental changes to the design provided herein.

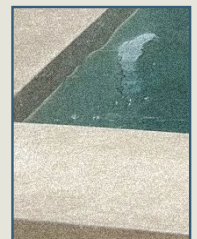
KKMK ARCHITECTS

Why *Greece?*



Embark on a seamless residency journey with Europe's fastest & most economical residency program. Through real estate investment you and your family secure a lasting visa. Benefit from the country's:

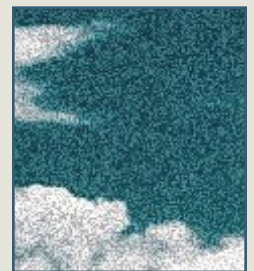
- ▶ *Economic* resurgence.
- ▶ *Tourism* appeal.
- ▶ *Government* incentives driven by fiscal discipline and *growth potential*.
- ▶ *Investors* enjoy promising returns with the constant demand for *accommodation & rental properties*.
- ▶ *Ensuring* consistent income streams and a *high-quality lifestyle*.



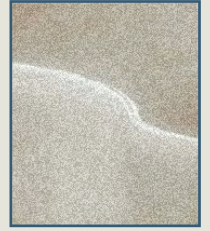
Athines by the sea - A Blissful Retreat



Escape to Athines By The Sea, where turquoise secrets await. This year-round paradise harmoniously blends exquisite dining, laid-back leisure, and perpetual summer vibes. Featuring four exquisite restaurants and beach bars, as well as fashionable shopping sprees, Athines By The Sea offers a daily escape into luxury. With yoga, water sports, and captivating sunsets, Athines By The Sea provides an inspiring retreat by the sea. Embrace the allure of pristine turquoise waters and golden sandy beaches, where every moment is a cherished treasure.



kkmk
Architects



KKMK
KARAGIANNI KARAMALI ARCHITECTS

The creative minds behind Karaiskaki 15, specialize in turning architectural visions into tangible masterpieces. KKMK Architects engages in projects of various scales and purpose ranging from landscape and building architecture to interior design, set design, ephemeral installations and product design. Their product aims to deliver remarkable architectural solutions, that are designed, questioned and tested as a whole. They bring together every aspect of the building to create unique projects.

About LMD in Greece



LMD is taking its real estate expertise to new horizons in Greece with residential developments in Voula and Glyfada, tailored to the discerning market. We offer comprehensive services and consultations for those seeking permanent residency and citizenship. Our influence spans diverse locales, meeting the demand for a wide collection of premier upscale properties throughout Greece. Moreover, we have established a cutting-edge management company that utilizes advanced technology and hospitality expertise to maximize investment growth. Revered for its selection of prime locations, LMD emerges as a dynamic force with a global perspective. Greece, LMD's chosen destination, is an investment opportunity. Be it locals or foreigners, Greece presents a favorable investment landscape. With its promising market dynamics and LMD's commitment to excellence, Greece aligns perfectly with LMD's vision.

In partnership with
EPSILON
Greece

LMD in *Greece*

Asklipiou 67

In partnership with
Netherfield



Omirou 31

In partnership with
Netherfield



Karaiskaki 15

In partnership with
Epsilon Greece



Archimidous 5

In partnership with
Epsilon Greece



About LMD

Since its inception in 2007, LMD has been on a dedicated mission to craft transformative experiences through thriving communities & integrated destinations that put you & innovation at heart.



LMD°

The company boasts a successful selection of projects, spanning first & second homes, as well as iconic mixed-use developments with a strong foothold in Dubai, Spain, and Greece. In Egypt, the journey began with two distinctive projects in New Cairo.

With an eye for excellence, a passion for impeccable taste, and a commitment to exceed every expectation, LMD is renowned today for its strategic locations, generous spaces and the highest standards of quality.

The company strives to transform living spaces by crafting larger-than-life places where quality seamlessly merges with comfort & integrated excellence, dictating the LMD experience.

LMD *Projects*



Greece

Athines By The Sea - Hospitality - Athens - Greece

Karaiskaki 15 - Residential - Athens - Greece

Asklipiou 67 - Residential - Athens - Greece

Omirou 31 - Residential - Athens - Greece

Archimidous 5 - Residential - Athens - Greece

Dubai, UAE

Continental Tower - Residential - Marina - Dubai - United Arab Emirates

Rukan - Mixed-use development & Residential - Dubai Land - Dubai - UAE

Marina Living - Residential - Dubai Marina - AlJaddaf - Dubai - UAE

Boutique XII - Residential - AlJaddaf - Dubai - United Arab Emirates

Boutique 23 - Residential - AlJaddaf - Dubai - United Arab Emirates

Egypt

STE18HT - Mixed-use development & Residential - New Cairo

Eastside - Commercial Destination - New Cairo

One Ninety - Mixed-use development - (Commercial, Retail & Offices) - New Cairo

W Residences Cairo - Branded Residences - New Cairo

Cairo Design District - Commercial & Hospitality - New Cairo

3Sixty - Commercial (Retail, Offices, Clinics) - Golden Square, New Cairo

Zoya - Second home - Coastal Living - Ghazala Bay, North Coast

Layan Residence - Residential - Golden Square, New Cairo

Aria - Residential - Mostakbal City, New Cairo

Barcelona, Spain

Muntaner 91 - Residential - Barcelona - Spain

LMD is all *Social* - Contact Us

Greece Head Office:

2nd floor, No 27-29, Aggelou Metaxa str.
Glyfada, P.C. 16674

Egypt Head Office & Showroom:

One Ninety - 90th Street South, New Cairo,
Cairo, Egypt

Dubai Head Office:

Office No. 701 & 702,
7th Floor Anantara Downtown, Business
Tower, Business Bay, Dubai
002 02 16295
info@lmd.com.eg
lmd.com.eg

Now you can connect with us on your favourite social media platforms, and get instant notifications about our latest news and events.

Click on the icons below to subscribe to our pages and follow us.



LMD°